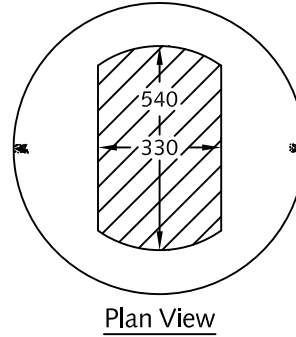
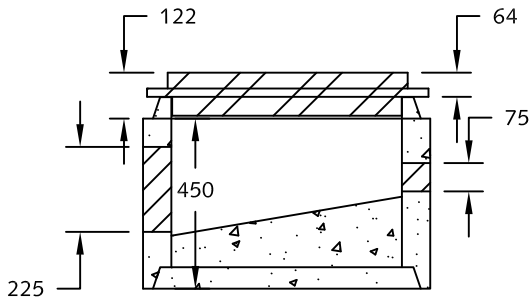


Ø600 x 600 Catchbasin
Inlet Style
Shown with 'Curb Style'
Frame & grate

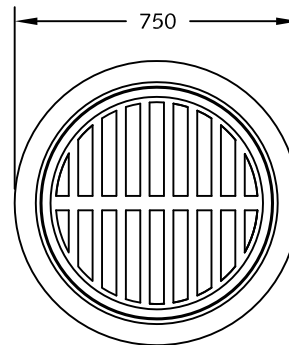


TR 23/24 'Curb Style'
Frame & Grate
Set on 'Curb Style Concrete
Lid , Reinforced to Meet
HS-20 Live Loading

Plan View



Ø600 x 600 Catchbasin
Inlet Style
Shown with 'Curb Style'
Frame & grate



TR26B frame & grate shown
H20 load rating
Effective height of casting: 65mm

Plan View

Notes:

1. Inlet Style Catchbasin designed to meet HS-20 loading.
2. Curb and parking lot style configurations shown.
3. Catchbasins manufactured to ASTM C478 specifications.
4. Minimum concrete strength: 27.5 MPa.
5. All dimensions are in millimeters.



DESCRIPTION:

Ø600 x 600
Catchbasin - Inlet Style
www.langleyconcretegroup.com

DRAWN BY: JAO

ORIGIN: CHWK

SCALE: 1:20

DRAWING NO:

DATE: Apr/22/2010

CB-2

This drawing is the property of the Langley Concrete Group of Companies. All information contained herein is confidential and may not be used in whole or in part without written permission from the owner.

LANGLEY (604)533-1656

VICTORIA (250) 478-9581

CHILLIWACK 1-800-667-9600