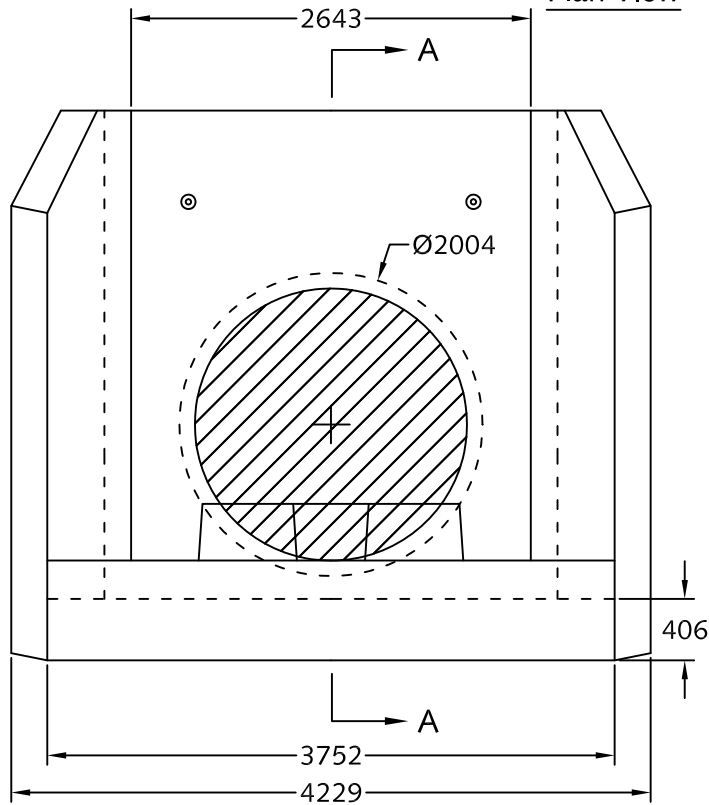
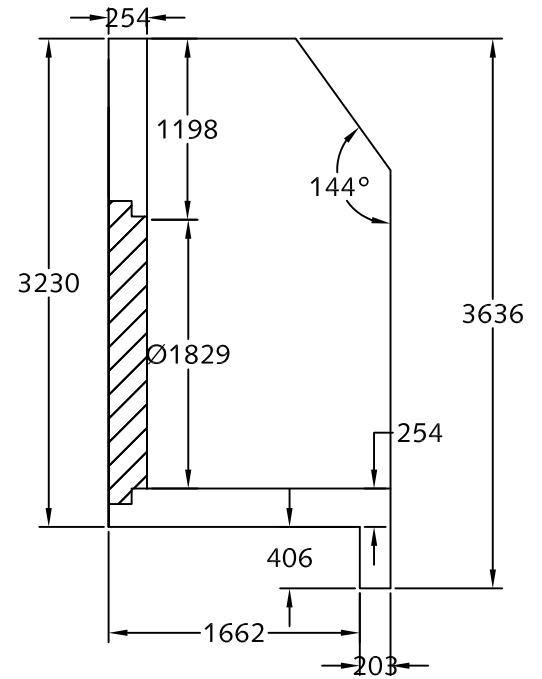


Plan View



Elevation View



Section A-A

Notes:

1. HW 26-28 to be built as shown.
2. Unit c/w Energy dissipator blocks as shown.
3. Unit c/w rough core for inlet & outlet as shown.
4. Suggested for pipe sizes to a maximum of 1800 mm diameter.
5. Structure c/w bolt anchors for grills and handrails.
6. Bolt on Inlet or Outlet grills and handrails are available upon request.
7. Unit c/w lifting inserts as required.
8. Approximate weight: 12500 kg.
9. Minimum rebar yield strength: 414 MPa.
10. Minimum concrete strength: 28 MPa.
11. All dimensions are in millimeters.



DESCRIPTION:

HW 26-28  
Ø1800 Pipe Design

[www.langleyconcretegroup.com](http://www.langleyconcretegroup.com)

DRAWN BY: KS ORIGIN: CHWK

CHK BY: JAO DWG NO:

DATE: May/12/2010 HW26-28-1.8

SCALE: 1:50

This drawing is the property of the Langley Concrete Group of Companies. All information contained herein is confidential and may not be used in whole or in part without written permission from the owner.