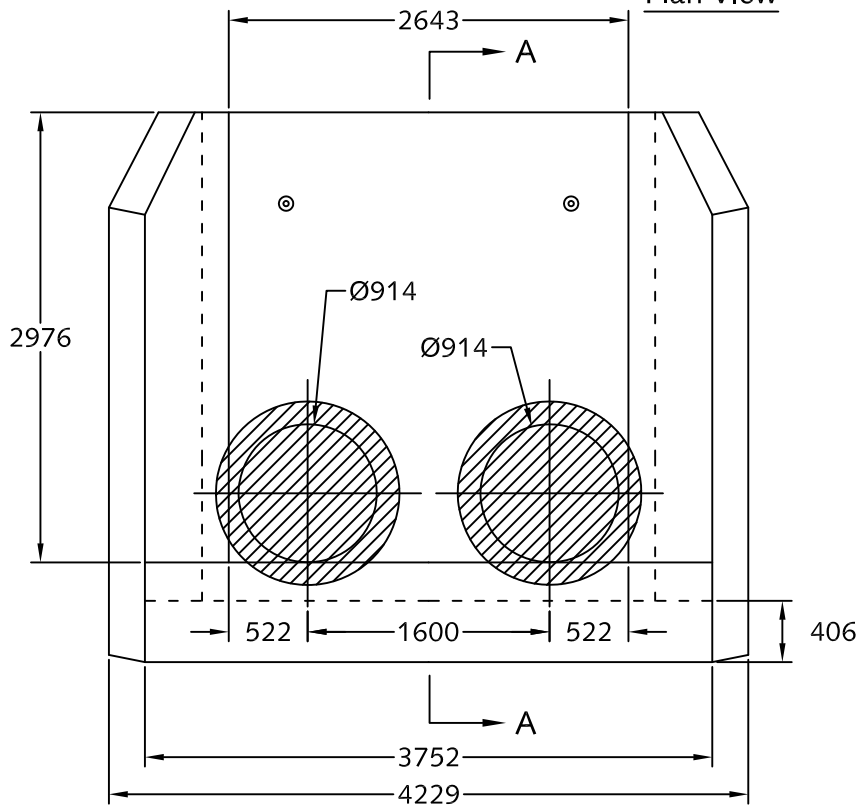
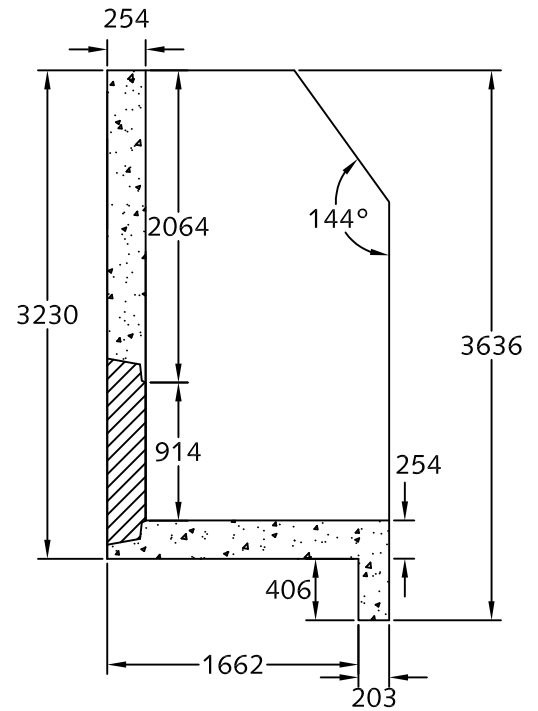


Plan View



Elevation View



Section A-A

Notes:

1. HW 26-28 to be built as shown.
2. Unit c/w 2-Ø914 mm rough cores as shown.
3. Structure c/w bolt anchors for grills and handrails.
4. Unit c/w lifting inserts as required.
5. Backwall height can be manufactured to varying heights as required to suit jobsite conditions.
6. Approximate weight: 12,500 kg.
7. Minimum rebar yield strength: 414 MPa.
8. Minimum concrete strength: 28 MPa.
9. All dimensions are in millimeters.



DESCRIPTION:

HW 26-28
w/ Twin Ø914 Openings
www.langleyconcretegroup.com

DRAWN BY:	KS	ORIGIN:	CHWK
CHK BY:	SW/JDB	DWG NO:	HW26-28-900TWIN-STD
DATE:	JAN/18/2010	REV DATE:	1. JULY/15/2010
SCALE:	1:50		

This drawing is the property of the Langley Concrete Group of Companies. All information contained herein is confidential and may not be used in whole or in part without written permission from the owner.