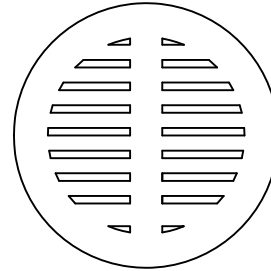


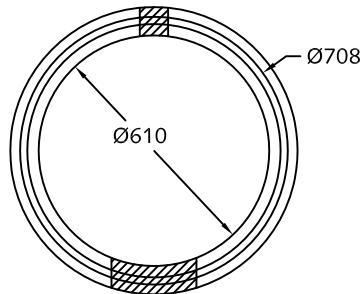
'B22B' H20 live loading cast iron grate

Weight: 63 Kgs.

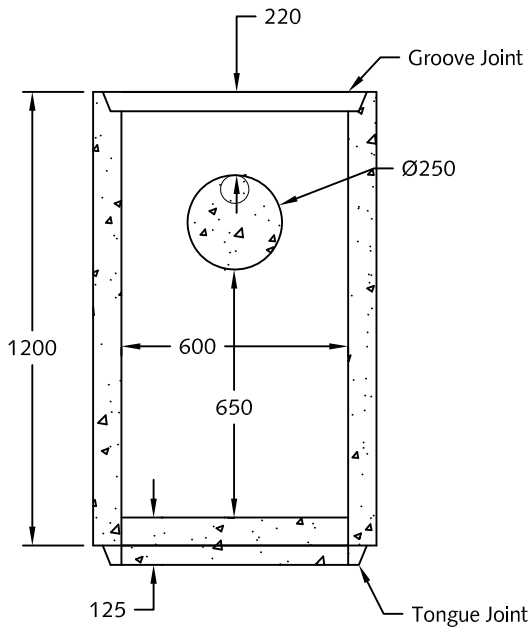


Non H20 slotted concrete lid

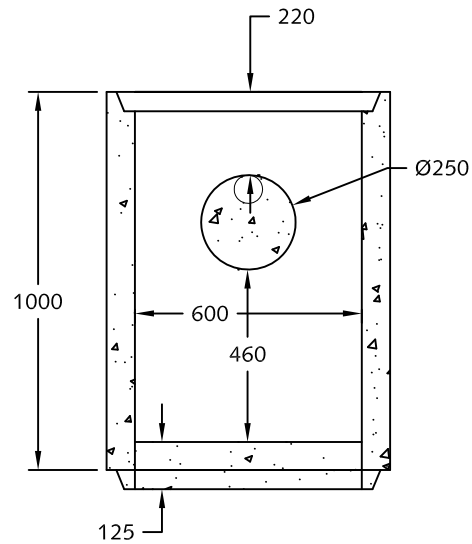
Weight: 45 Kgs.



Plan View of Lawnbasins



Section Views of Lawnbasins
Weight: 600 kgs



Section Views of Lawnbasins
Weight: 500 kgs

Notes:

1. Min. concrete strength: 27.5MPa.
2. Comes with 225mm core for outlet pipe.
3. Comes with cast in base.
4. Trapping hood pins available on request.
5. Cast iron or concrete grates fit flush in groove joint.



DESCRIPTION:

**Standard 600 Diameter
Lawn Basins**

DRAWN BY: JAO

ORIGIN: CHWK

SCALE: 1:20

DRAWING NO:

DATE: 03/25/02

This drawing is the property of the Langley Concrete Group of Companies. All information contained herein is confidential and may not be used in whole or in part without written permission from the owner.

LB-2