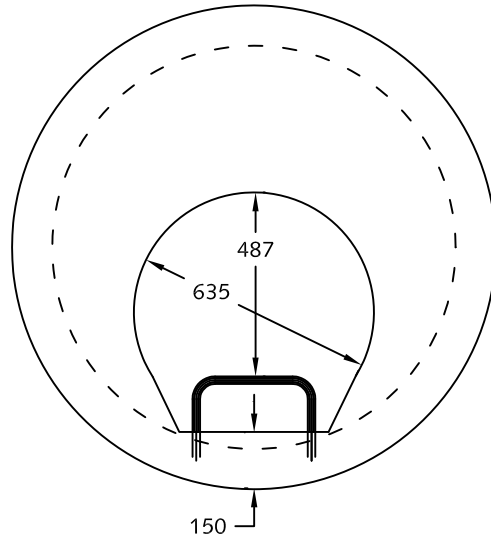


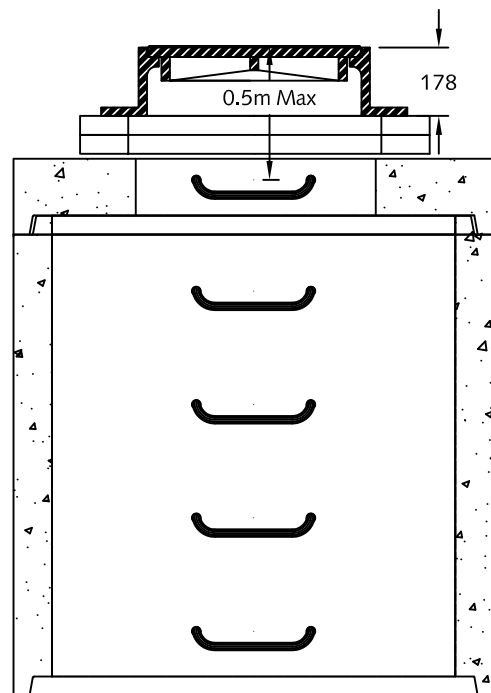
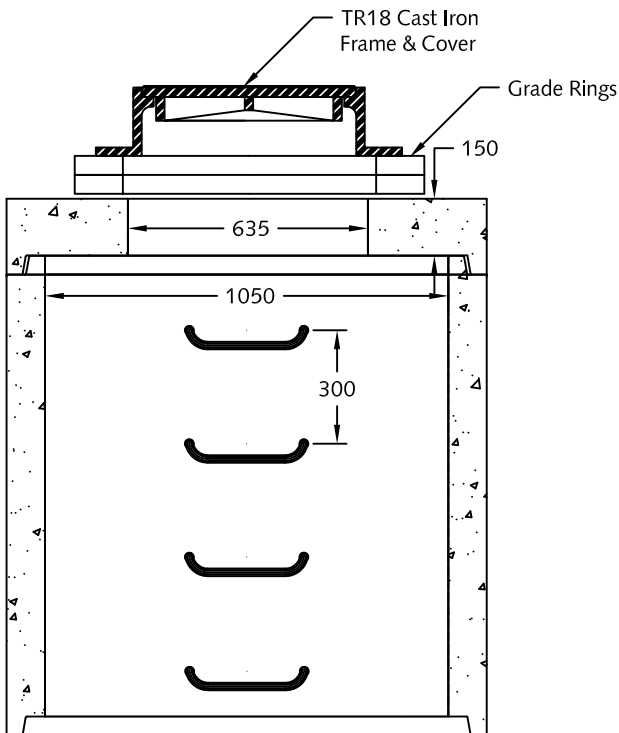
Standard Lid

Allows for minimal spacer additions under casting.



1050 Step Lid

Designed to allow additional spacers to be used under casting and meet W.C.B. OHS Guideline Section 13, G13.2(1)(b)



Section Views

Notes:

1. Manhole barrel and lids designed to meet ASTM C478 specs.
2. Manhole lids reinforced to H20 live loading.
3. Manhole rungs placed @ 300mm c/c.
4. Min. concrete strength: 28 MPa.
5. Manhole and lids available in Ø900 - 3050mm.



DESCRIPTION:

Standard Manhole Lid Openings

DRAWN BY: JAO

ORIGIN: CHWK

SCALE: 1:20

DRAWING NO:

DATE: 02/10/30

This drawing is the property of the Langley Concrete Group of Companies. All information contained herein is confidential and may not be used in whole or in part without written permission from the owner.

MHL-1

LANGLEY (604)533-1656

VICTORIA (250) 478-9581

CHILLIWACK 1-800-667-9600