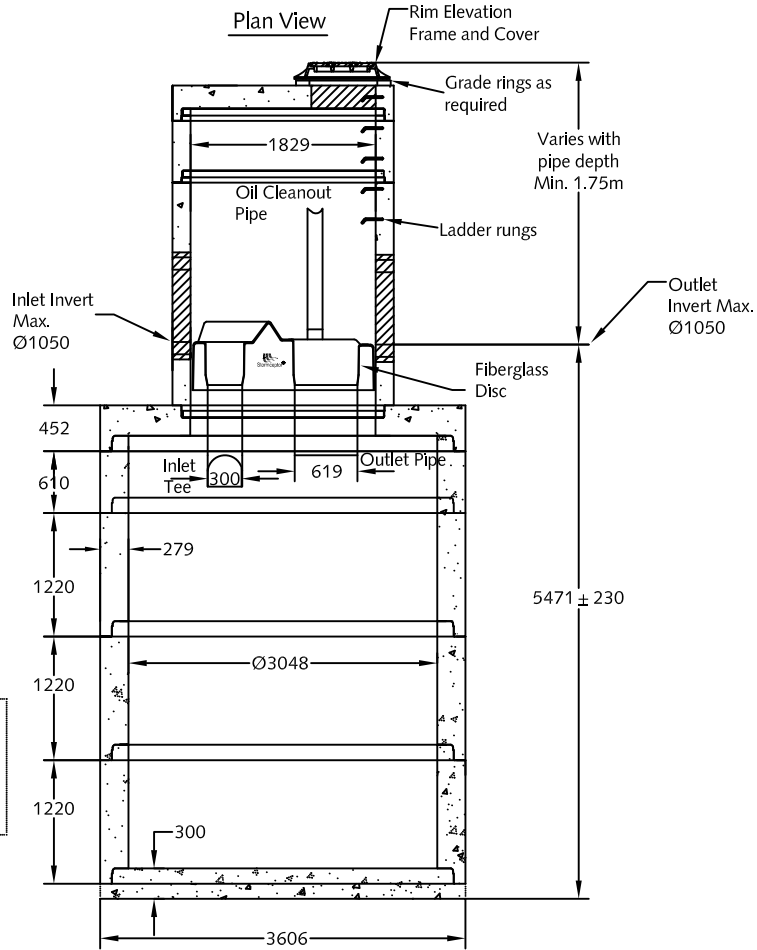


Plan View



Section View w/Elevation

Capacities:
Sediments - 23,181 litres
Hydrocarbons - 4758 litres

- Notes:
1. STC 6000 supplied in components to suit site elevations.
 2. Ø1800mm manhole section w/insert to have inlet/outlet stubs/cores as required.
 3. Base provided as separate flat base.
 4. For designs where pipe invert is < 0.8m below surface, contact sales office.
 5. Design requires inlet invert 25mm higher than outlet.
 6. Inlet pipes can be oriented up to 90 ° from outlet, depending on pipe size/type.
 7. Single inlet pipe only.
 8. Lid supplied w/Ø635mm access designed to HS-25 live loading.
 9. Ladder rungs supplied at 300mm spacing as shown.
 10. Manhole manufactured to ASTM C478 specifications.
 11. Lifting inserts supplied in manhole sections.
 12. Approx. weight:
3050x1220 manhole:8800 kgs.[19380 lbs.], flat base: 6700 kgs. [14,740 lbs.]
 13. Type GU Cement; min. concrete strength:27.5MPa.
 14. Stormceptor protected by Canadian Patent # 2009208, 2137942, 2175277, 2180305.



DESCRIPTION:
Stormceptor STC-6000
Single Inlet Design
www.langleyconcretegroup.com

DRAWN BY:	JAO	ORIGIN:	CHWK
SCALE:	1:75	DRAWING NO.:	STC6000-STD
DATE:	May/04/2010		
<small>This drawing is the property of the Langley Concrete Group of Companies. All information contained herein is confidential and may not be used in whole or in part without written permission from the owner.</small>			