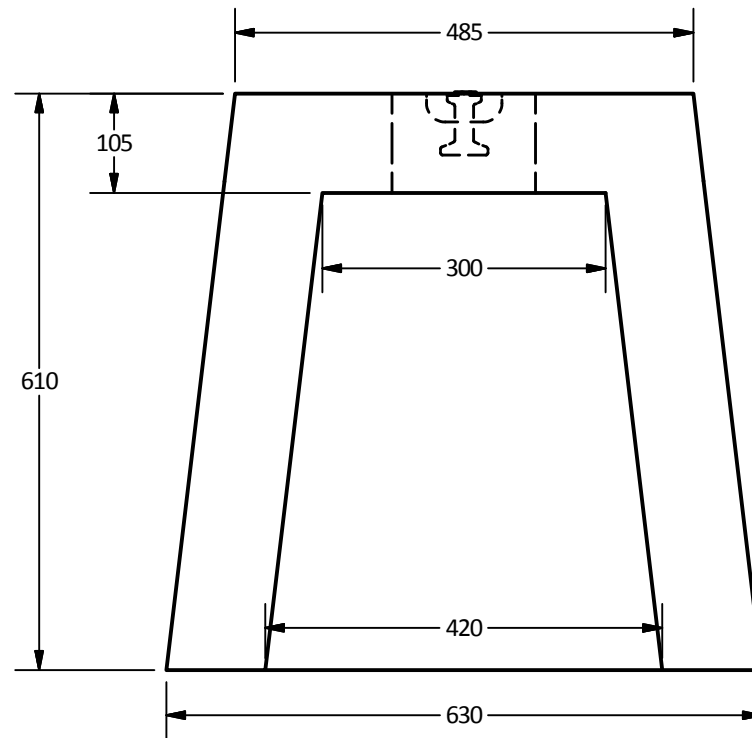
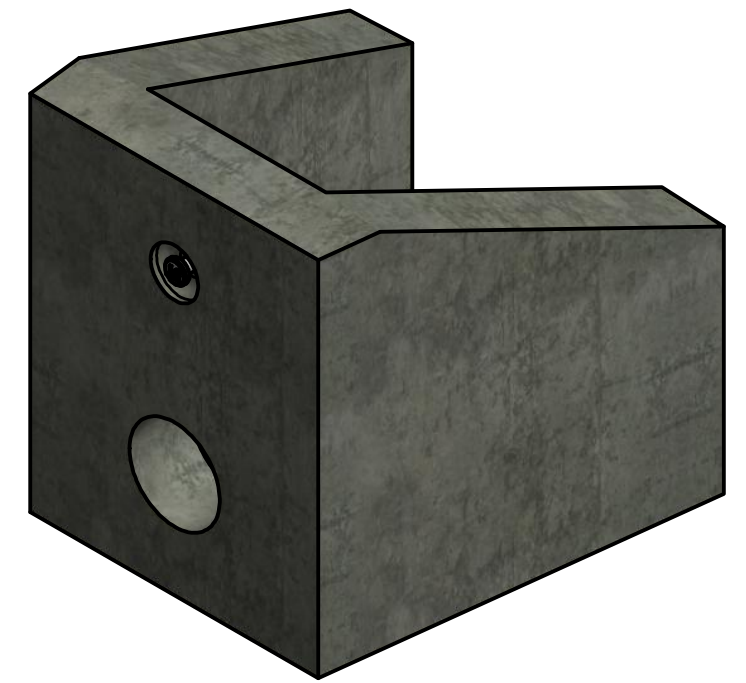


PART LIST			
ITEM	QTY	PART NUMBER	WEIGHT
1	1	Headwall	250 kg.

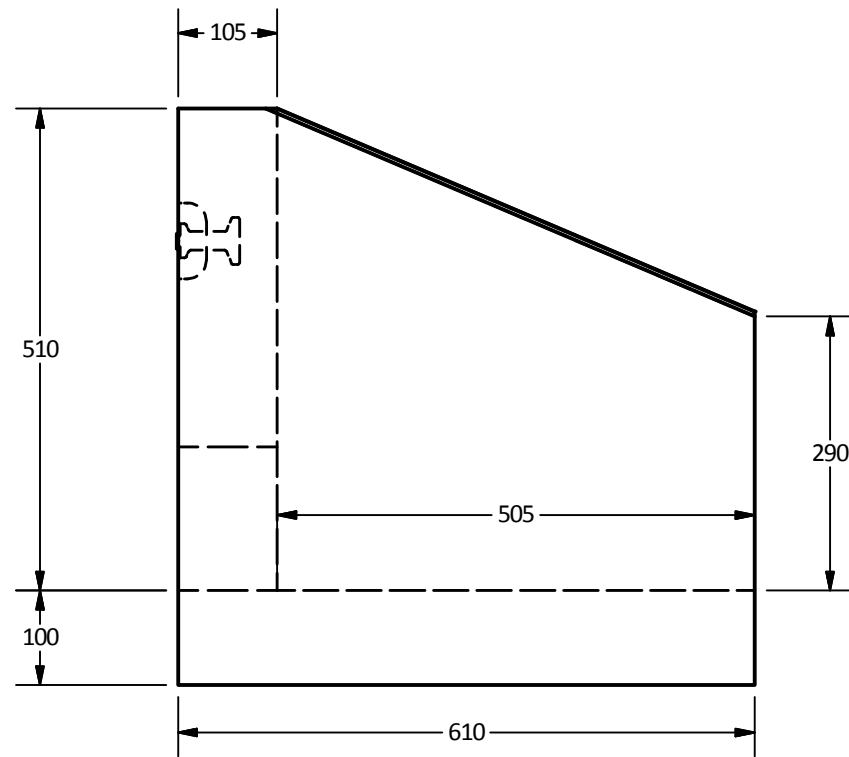
- Notes:
1. Structure to have $\varnothing 150 - \varnothing 305$ mm PVC stubs provided, inverts set to floor as shown.
 2. Wall thickness to be 105mm.
 3. Optional sloped face available for "wing walls".
 4. Inlet core to come with gasket as shown.
 5. Minimum concrete strength: 35 MPa.



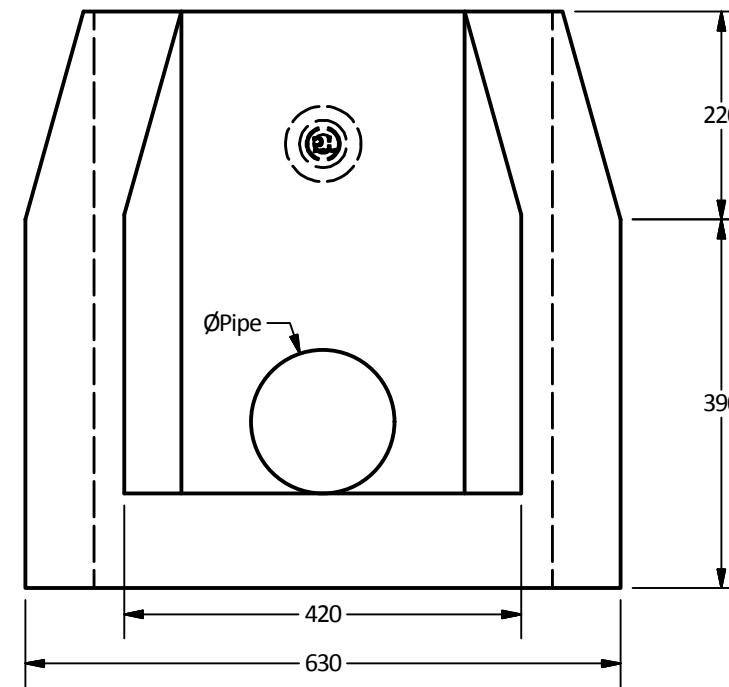
Plan View



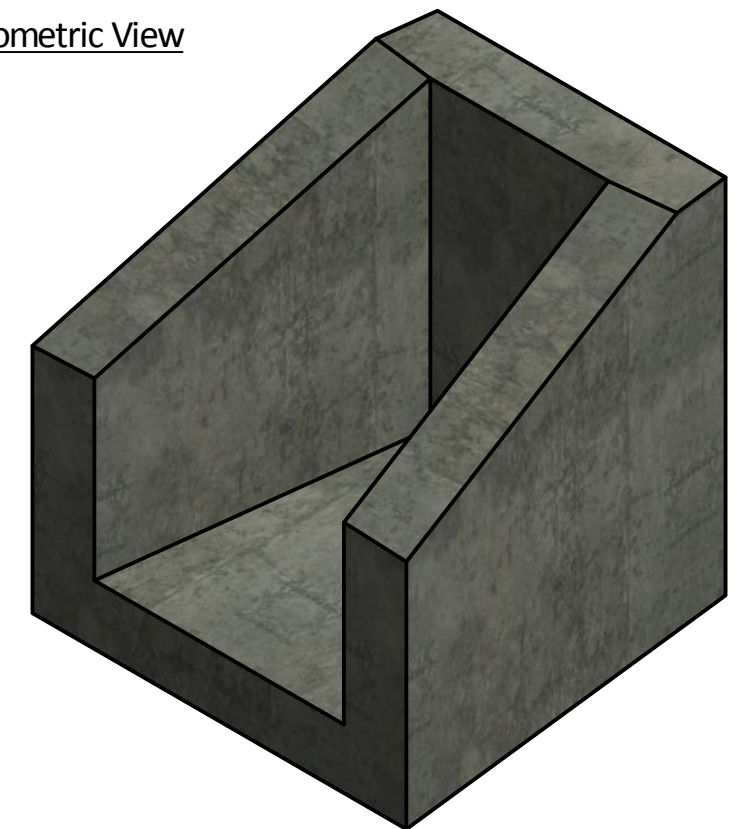
Isometric View



Side View



Elevation View



Langley Concrete Group is a certified Q-Cast Plant, an American Concrete Pipe Association Third Party Certification for the manufacture of Pipe, Manhole, Box Culvert & Precast Items.



Quality Assurance of products manufactured by The Langley Concrete Group has been verified by the following third party certification programs



All Dimensions are in Millimeters. Unless otherwise Stated

Projection Method: THIRD ANGLE



LANGLEY (604) 533-1656
VICTORIA (250) 478-9581
CHILLIWACK 1-800 667-9600

This drawing is the property of the Langley Concrete Group of Companies. All information contained herein is confidential and may not be used in whole or in part without written permission from the owner

DESCRIPTION:

Mini Headwall
Lot Outfall Structure

DRAWN BY:
SR

JOB NO.

CHK BY:
KS

DWG NO:
HW-O-LOT-1.0

DATE:
Aug.10, 2018

SCALE:
1:8

SIZE:
11 x 17

REV.

SHEET 1 OF 1