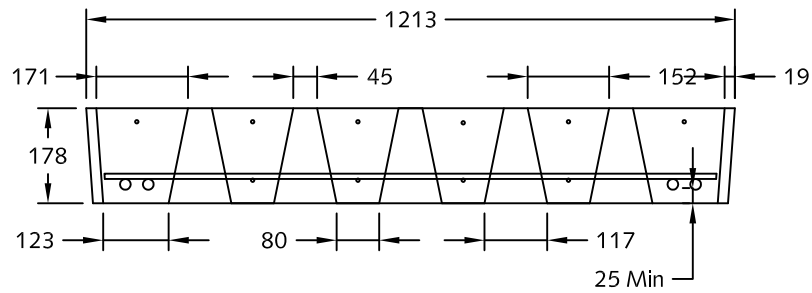


Section A - A



Section B - B

Scale 1:15

Notes:

1. The slotted floor sections are designed in accordance with the National Farm Building Code 1995
2. Concrete design strength - 41.4 MPa minimum
3. D rebar yield stress - 500 MPa, rebar yield stress - 414 MPa
4. These sections have been designed for a maximum live load of 24 kN/m²
5. Design assumes a minimum bearing length of 76.2 mm each end
6. All slots are 457.2 mm x 44.45 mm



Quality Assurance of products manufactured by The Langley Concrete Group has been verified by the following third party certification programs:



The LANGLEY CONCRETE Group of Companies

www.langleyconcretegroup.com

LANGLEY (604) 533-1656 VICTORIA (250) 478-9581 CHILLIWACK 1-800 667-9600

DESCRIPTION:

Agricultural Flooring
Slotted Cattle Slat Details

DRAWN BY:	JAO	DWG NO: Agr.-3
CHK BY:	N/A	REV DATE: N/A
DATE:	Dec/17/2009	
SCALE:	1:30	
<small>This drawing is the property of the Langley Concrete Group of Companies. All information contained herein is confidential and may not be used in whole or in part without written permission from the owner.</small>		LCG Products are held to the governing ASTM, and CSA specification & tolerances.