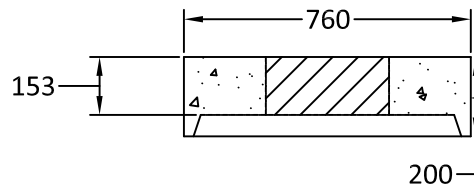
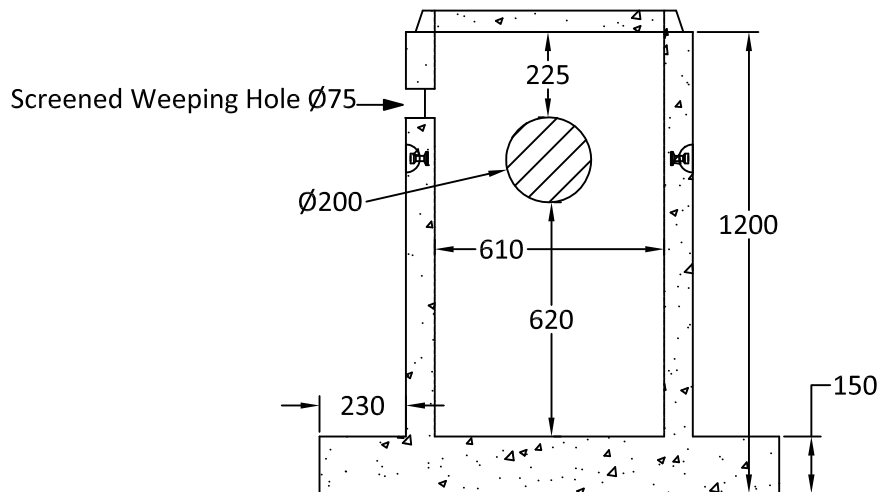


Plan View



HS-20 highway loading lid, to accept TR 23/24
Effective height: 150mm
Lid weight: 123 KG



Elevation View

Notes:

1. Catchbasin comes with extended base.
2. H2O lid shown for a B23/24 style curb frame & grate.
3. Comes w/ weeping hole, core, optional pins for trapping hoods.
4. Base thickness: 150mm.
5. Approx. weight: 920 kgs.
6. Min. concrete strength: 30 MPa.



Quality Assurance of products manufactured by The Langley Concrete Group has been verified by the following third party certification programs:



The LANGLEY CONCRETE Group of Companies
www.langleyconcretegroup.com

DESCRIPTION:

Ø600x1000
Catch Basin - Extended Base

LANGLEY (604) 533-1656 VICTORIA (250) 478-9581 CHILLIWACK 1-800 667-9600

DRAWN BY: JAO

JOB NO.: N/A

CHK BY:

DWG NO: CB-1b

DATE: Apr. 17, 2010

REV.A JZ, AUG20,2018

SCALE: 1:20

This drawing is the property of the Langley Concrete Group of Companies. All information contained herein is confidential and may not be used in whole or in part without written permission from the owner.

LCG Products are held to the governing ASTM, and CSA specification & tolerances.