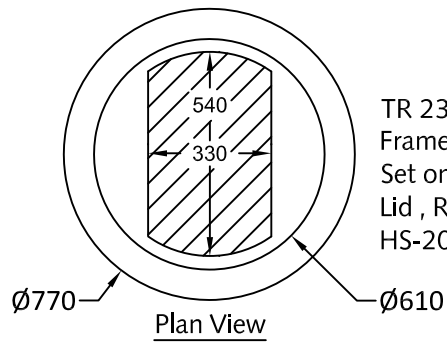
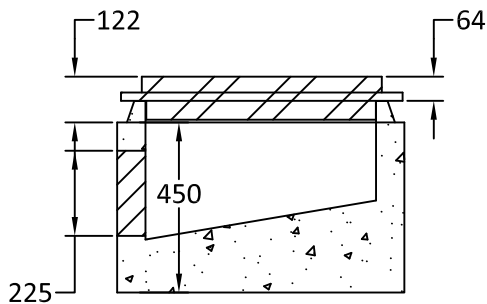


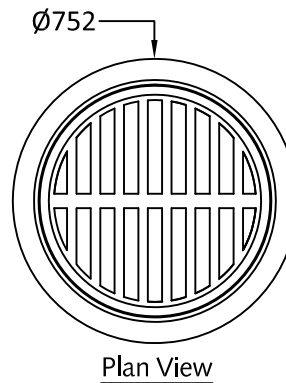
Ø600 x 600 Catchbasin  
Inlet Style  
Shown with 'Curb Style'  
Frame & grate



TR 23/24 'Curb Style"  
Frame & Grate  
Set on 'Curb Style Concrete  
Lid , Reinforced to Meet  
HS-20 Live Loading



Ø600 x 600 Catchbasin  
Inlet Style  
Shown with 'Curb Style'  
Frame & grate



TR26B frame & grate shown  
H20 load rating  
Effective height of casting: 65mm

**Notes:**

1. Inlet Style Catchbasin designed to meet HS-20 loading.
2. Curb and parking lot style configurations shown.
3. Catchbasins manufactured to ASTM C478 specifications.
4. Minimum concrete strength: 30 MPa.
5. All dimensions are in millimeters.



Quality Assurance of products manufactured by The Langley Concrete Group has been verified by the following third party certification programs:



The LANGLEY CONCRETE Group of Companies  
www.langleyconcretegroup.com

**DESCRIPTION:**

Ø600x600  
Catch Basin - Inlet Style

DRAWN BY: JAO	JOB NO.: N/A
CHK BY:	DWG NO: CB-2
DATE: Apr. 22, 2010	REV.A JZ, AUG20,2018
SCALE: 1:20	

This drawing is the property of the Langley Concrete Group of Companies. All information contained herein is confidential and may not be used in whole or in part without written permission from the owner.

LCG Products are held to the governing ASTM, and CSA specification & tolerances.

LANGLEY (604) 533-1656 VICTORIA (250) 478-9581 CHILLIWACK 1-800 667-9600