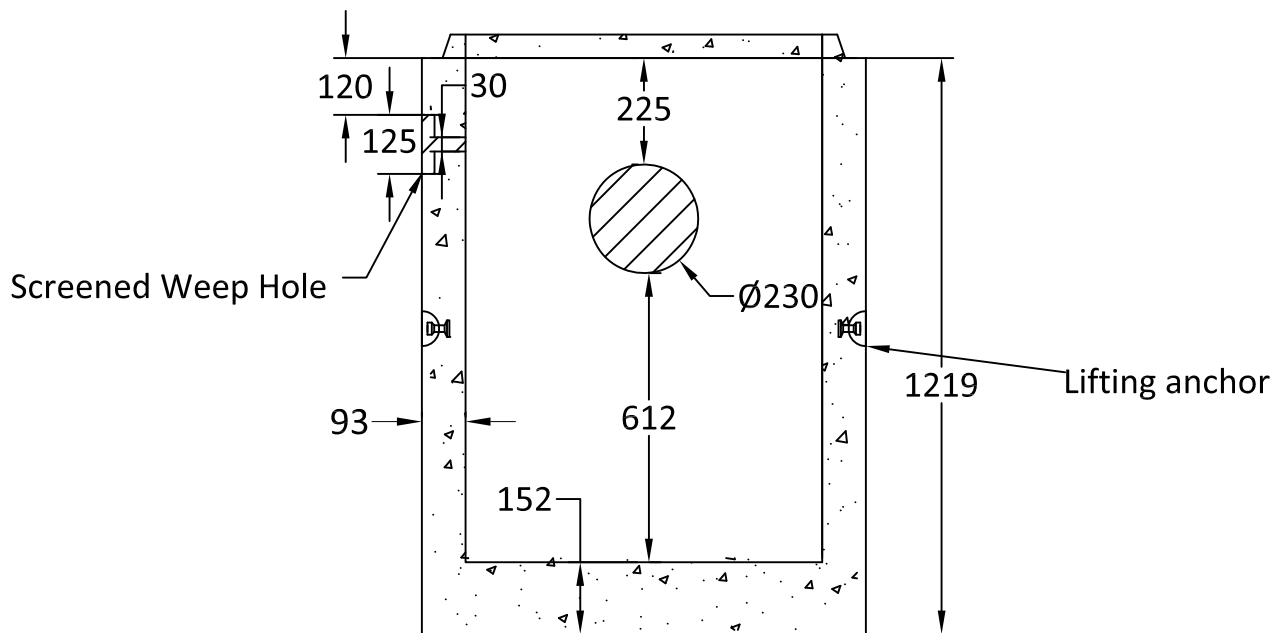


Plan View



Section A-A

Notes:

1. Reinforced 750x1200 catchbasin w/base & core as shown.
2. Core to be 225Ømm as shown.
3. Screened weeping hole provided as shown.
4. Lifting anchor to be provided as shown
5. Approx. weight: 1062 kg.
6. Min. concrete strength: 30 MPa.



Quality Assurance of products manufactured by The Langley Concrete Group has been verified by the following third party certification programs:



[www.langleyconcretegroup.com](http://www.langleyconcretegroup.com)

DESCRIPTION:  
750x1200 C478  
Catch Basin

DRAWN BY: JAO	JOB NO.: N/A
CHK BY:	DWG NO: CB0.75X1.2WB
DATE: Mar. 24, 2002	REV. BY: CC
SCALE: 1:20	Aug. 14, 2018
<small>This drawing is the property of the Langley Concrete Group of Companies. All information contained herein is confidential and may not be used in whole or in part without written permission from the owner.</small>	LCG Products are held to the governing ASTM, and CSA specification & tolerances.

LANGLEY (604) 533-1656 VICTORIA (250) 478-9581 CHILLIWACK 1-800 667-9600