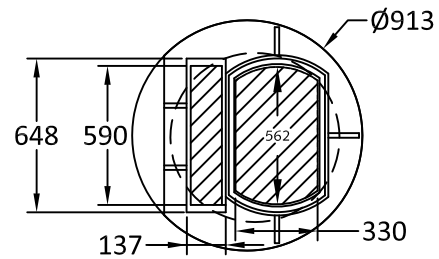
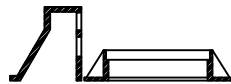


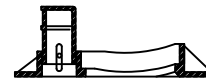
TR39 Side Inlet Opening
Concrete Lid
Plan View



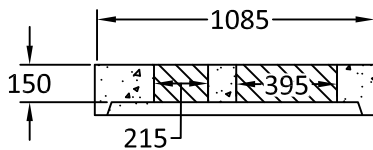
TR23/24 Adjustable Curb Style
Set on Concrete Lid
Plan View



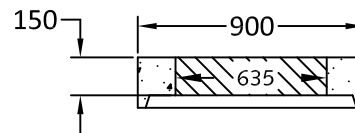
TR39B Storm Side Inlet - TR39 Frame & TR3939A Grate



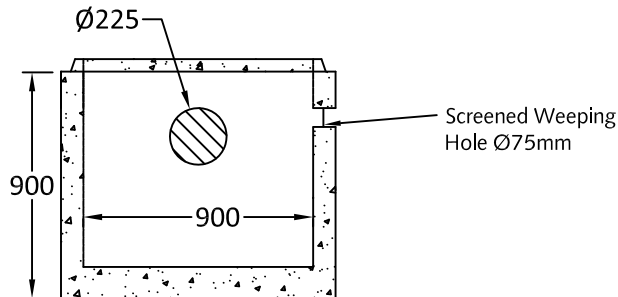
TR24 Adjustable Hood & Frame Set - Takes TR23 Grate



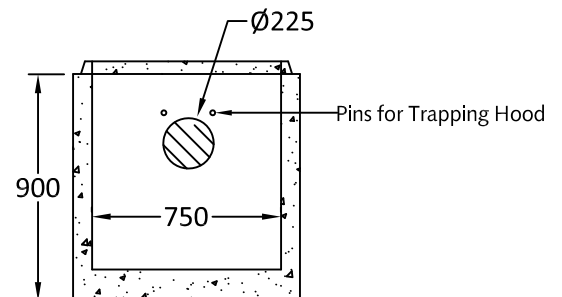
Section View
Lid to Fit Ø900 Barrel
Weight: 250 kgs.



Section View
Lid to Fit Ø750 Barrel
Weight: 150 kgs.



900 x 900mm Catchbasin
Weight: 768 Kgs.



750 x 900mm Catchbasin
Weight: 590 Kgs.

Notes:

1. All lids Designed for HS-20 Loading.
2. Catchbasins manufactured to ASTM C478 specifications.
3. Min. Concrete Strength: 30 MPa.
4. 50mm Concrete Spacers for Frames available.
5. All dimensions are in millimeters.



Quality Assurance of products manufactured by The Langley Concrete Group has been verified by the following third party certification programs:



The LANGLEY CONCRETE Group of Companies
www.langleyconcretegroup.com

LANGLEY (604) 533-1656 VICTORIA (250) 478-9581 CHILLIWACK 1-800 667-9600

DESCRIPTION:

Side Inlet Castings, Lids, and CBs

DRAWN BY: JAO	JOB NO.: N/A
CHK BY:	DWG NO: CB-7
DATE: July 2, 1998	REV.A JZ, AUG20,2018

SCALE: 1:30	
<small>This drawing is the property of the Langley Concrete Group of Companies. All information contained herein is confidential and may not be used in whole or in part without written permission from the owner.</small>	LCG Products are held to the governing ASTM, and CSA specification & tolerances.