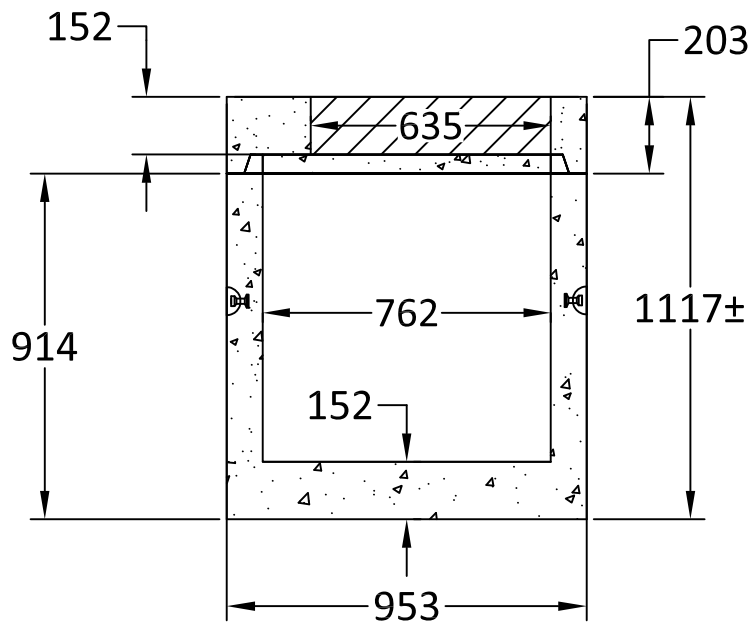


Plan View



Section View

Notes:

1. $\text{\O}750$ mm Catch Basin built for ASTM C478 Specification.
2. Approximate mass:
 - Barrel: 636 kg/m.
 - Lid [w/o opening]: 275 kg.
 - Total mass: 1,830 kg.
3. Minimum concrete strength: 30 MPa.
4. Welded wire mesh min. yield strength: 448 MPa.
5. Minimum rebar yield strength: 414 MPa.
6. All dimensions are in millimeters.



Quality Assurance of products manufactured by The Langley Concrete Group has been verified by the following third party certification programs:



The LANGLEY CONCRETE Group of Companies
www.langleyconcretegroup.com

DESCRIPTION:
 $\text{\O}750$ mm Catch Basin
w/ $\text{\O}635$ mm Opening
LANGLEY (604) 533-1656 VICTORIA (250) 478-9581 CHILLIWACK 1-800 667-9600

DRAWN BY: KS	JOB NO.: N/A
CHK BY: JM	DWG NO: CB750X900-2.0
DATE: APR. 14, 2011	REV. BY:
SCALE: 1:20	LCG Products are held to the governing ASTM, and CSA specification & tolerances.
<small>This drawing is the property of the Langley Concrete Group of Companies. All information contained herein is confidential and may not be used in whole or in part without written permission from the owner.</small>	