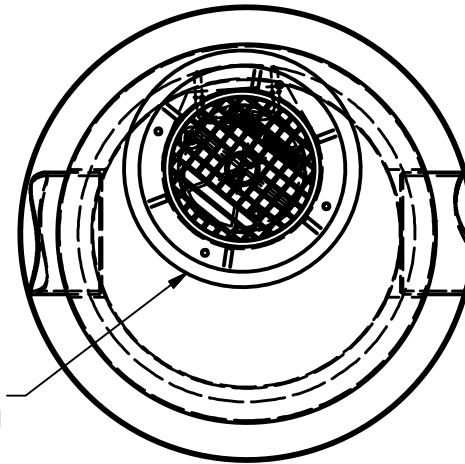


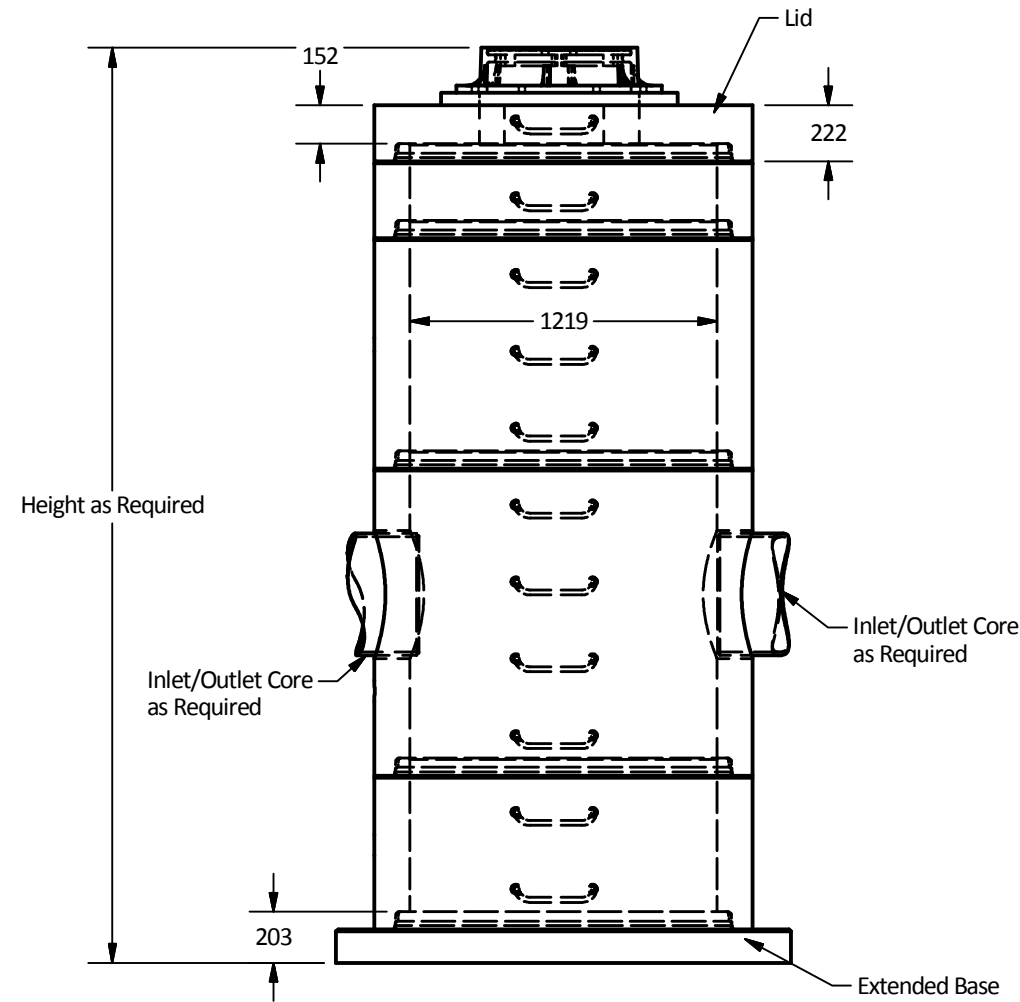
Note:

1. Ø1219 Manhole manufactured to ASTM C478 specification.
2. Concrete designed to withstand HS20, BCL 625 live loadings.
3. Unit supplied with cores as required.
4. Unit supplied with ladder rungs as required.
5. Unit supplied with lifting insert as required.
6. Unit supplied with access opening as required.
7. WWF minimum yield strength: 448 MPa.
8. Minimum rebar yield strength: 414 MPa.
9. Minimum concrete strength:
  - MH Barrel: 30 MPa.
  - Lid & Base: 35 MPa.
10. All reinforcing to have minimum 25 mm of concrete cover.
11. All dimensions are in millimeters.



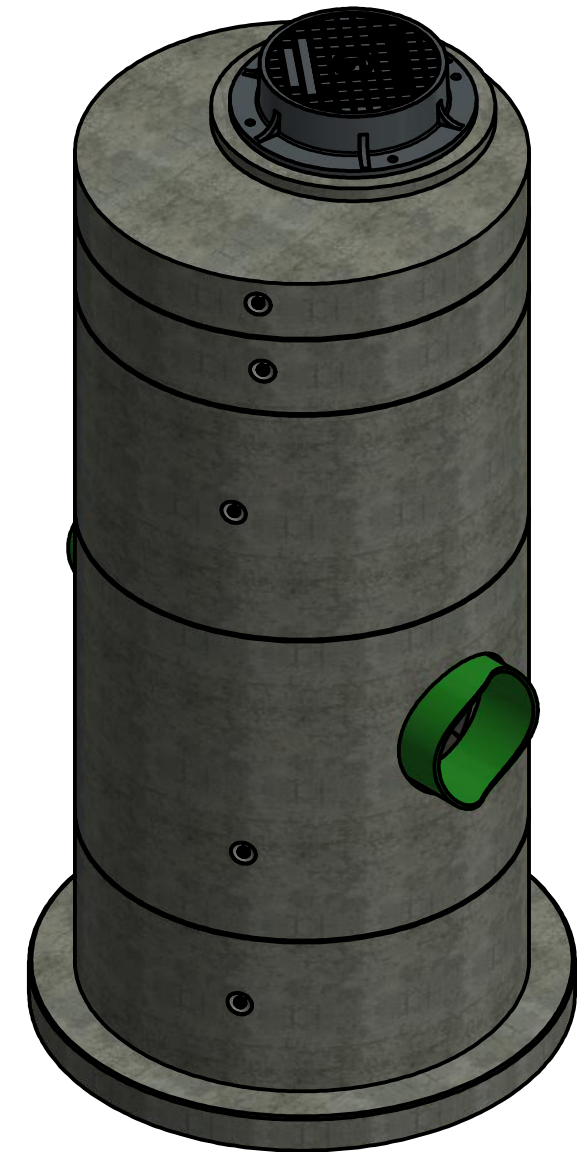
Access Opening size and Location as Required

Plan View



Height as Required

Elevation View



Isometric View

PART LIST			
ITEM	QTY	PART NUMBER	WEIGHT
1	As Required	1200 Manhole	1,550 kg/m
2	1	1200 Lid MH	750 kg.
3	1	1200 Ext Base MH	1,150 kg.

Langley Concrete Group is a certified Q-Cast Plant, an American Concrete Pipe Association Third Party Certification for the manufacture of Pipe, Manhole, Box Culvert & Precast Items.



Quality Assurance of products manufactured by The Langley Concrete Group has been verified by the following third party certification programs



All Dimensions are in Millimeters. Unless otherwise Stated

Projection Method: THIRD ANGLE



**THE**  
*Langley*  
**CONCRETE**  
**GROUP**  
www.langleyconcretegroup.com

LANGLEY (604) 533-1656  
VICTORIA (250) 478-9581  
CHILLIWACK 1-800 667-9600

This drawing is the property of the Langley Concrete Group of Companies. All information contained herein is confidential and may not be used in whole or in part without written permission from the owner

DESCRIPTION:

Ø1219 Manhole  
with Extended Base

DRAWN BY: SR		JOB NO.
CHK BY: KS		DWG NO: MH-1219-EXT Base
DATE: Aug.31, 2018		
SCALE: 1:30		
SIZE 11 x 17	REV.	SHEET 1 OF 1