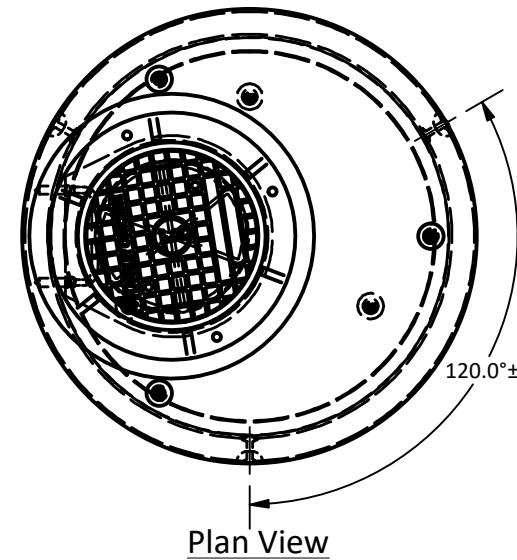


Langley Concrete Group - Mainland Manhole Dimensions

MH Diameter [A] (mm)	Wall Thickness [B] (mm)	Joint Height [C] (mm)	Lid Thickness [D] (mm)	Base Thickness [E] (mm)
914	102	70	152	152
1067	109	70	152	152
1219	109	108	152	152
1372	140	108	203	203
1524	152	121	203	203
1829	178	127	203	203
2438	229	130	280	203
3048	279	152	280	203

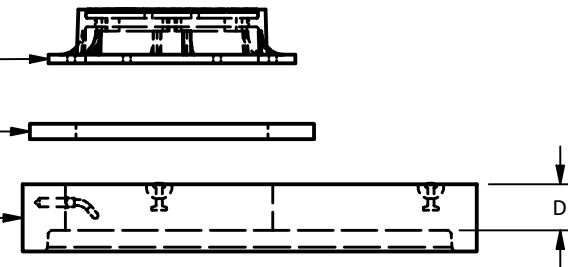


Plan View

Cast Iron Frame & Cover
to meet BCL625 / HS20 Loading

Grade Riser Rings
51, 76, 102mm Heights

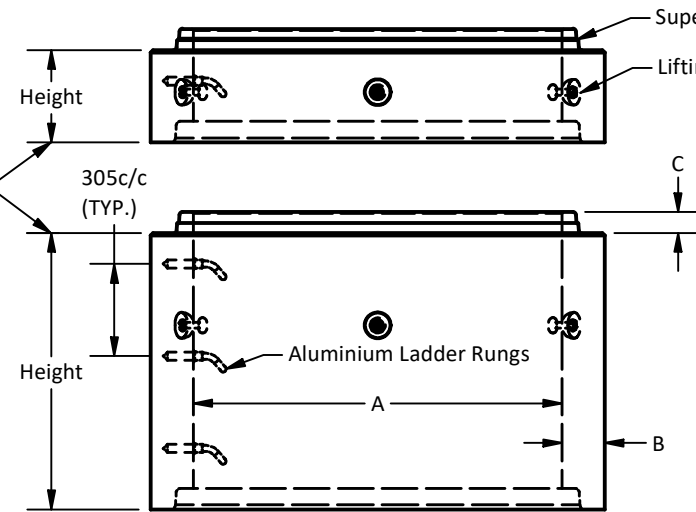
BCL625 / HS20 Rated Lids
Custom Access Opening Available



Super Seal Gasket

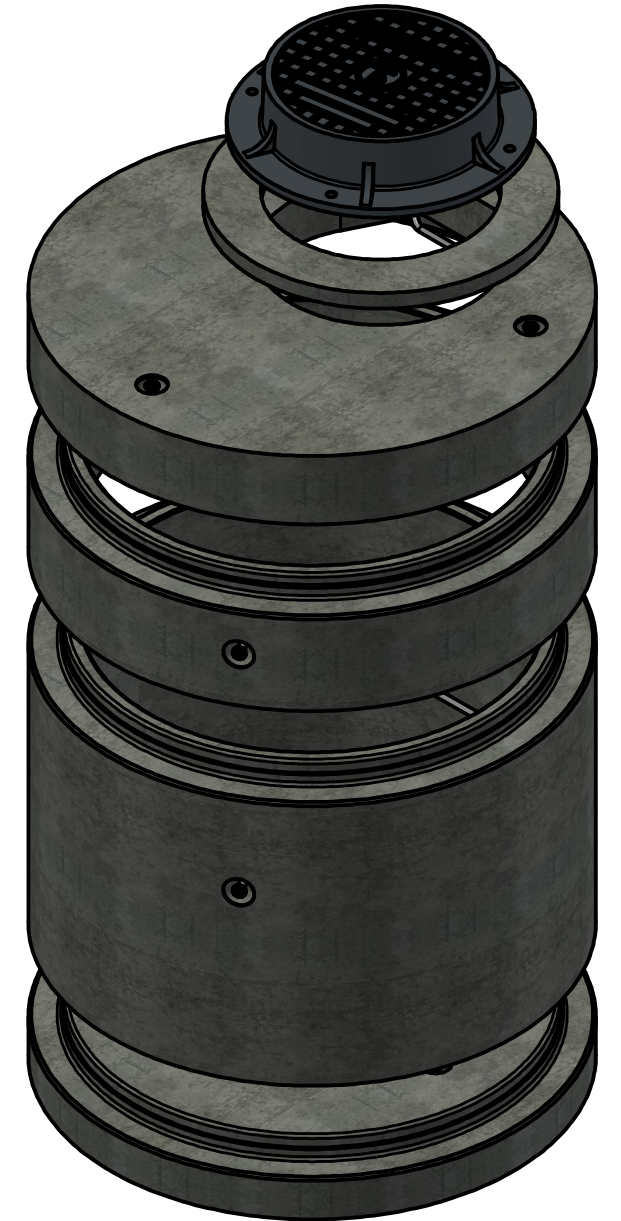
Lifting Inserts

Standard Manhole Risers:
0.152m Height - Only for Ø1067mm Manhole
0.305m Height
0.610m Height
0.914m Height
1.129m Height



Optional Inside Pour Flat Base
or Detached Base or Pre-Bench
Bases Available

Elevation View



Isometric View

Note:

1. Manhole manufactured to ASTM C478 & CSA 257.4 specifications.
2. Concrete designed to withstand HS20 / BCL 625 live loadings.
3. Unit supplied w/ Alum. ladder rungs as required.
4. Unit supplied w/ lifting insert as required. Starcon style lifting inserts to be used.
 - Note: Sling angle to the vertical no more than 15°.
5. WWF minimum yield strength: 448 MPa.
6. Minimum rebar yield strength: 414 MPa. (Steel Grade: CSA G30.18-400 Weldable)
7. Unit supplied with Tylox Super Seal Gasket System for water and soil/silt tight gasket and joint to meet or exceed ASTM C443, ASTM C1619 and CSA A-257.3.
8. Gasket can be employed for 13Psi rated sealed joint.
9. Minimum concrete strength:
 - Barrel: 30 MPa.
 - Lid & Base: 35 MPa.
10. All reinforcing to have minimum 25.4 mm of concrete cover.
11. All dimensions are in millimeters unless otherwise specified.

Langley Concrete Group is a certified Q-Cast Plant, an American Concrete Pipe Association Third Party Certification for the manufacture of Pipe, Manhole, Box Culvert & Precast Items.



Quality Assurance of products manufactured by The Langley Concrete Group has been verified by the following third party certification programs



All Dimensions are in Millimeters. Unless otherwise Stated

Projection Method:
THIRD ANGLE



The LANGLEY CONCRETE Group of Companies
www.langleyconcretegroup.com
LANGLEY (604) 533-1656
VICTORIA (250) 478-9581
CHILLIWACK 1-800 667-9600

This drawing is the property of the Langley Concrete Group of Companies. All information contained herein is confidential and may not be used in whole or in part without written permission from the owner

DESCRIPTION:

Ø914 - 3048mm Superseal Gasket Manhole Details
Designed to Meet BCL625 / HS20 Loading

DRAWN BY: SR	JOB NO.
CHK BY: KS	DWG NO: SSM-1.0
DATE: Oct.27, 2020	LC NO:
SCALE: 1:20	MU NO:
SIZE 11 x 17	REV.
SHEET 1 OF 1	