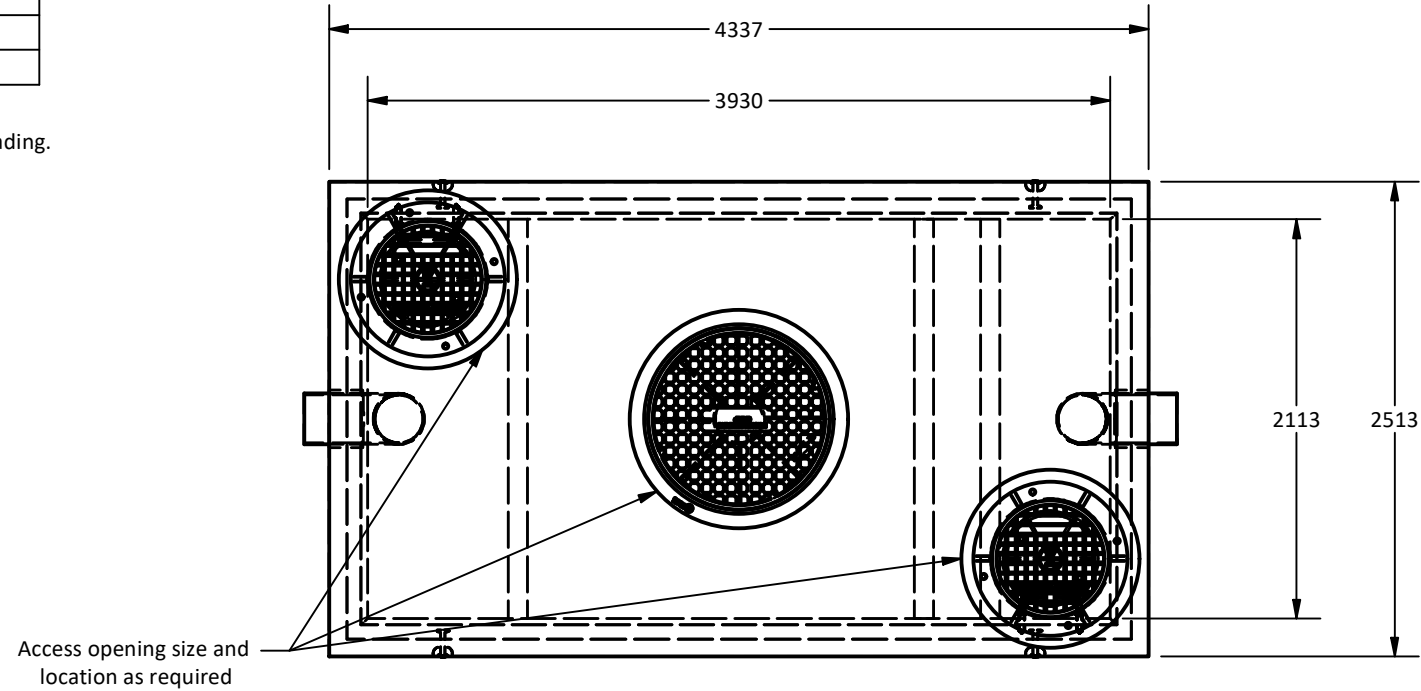
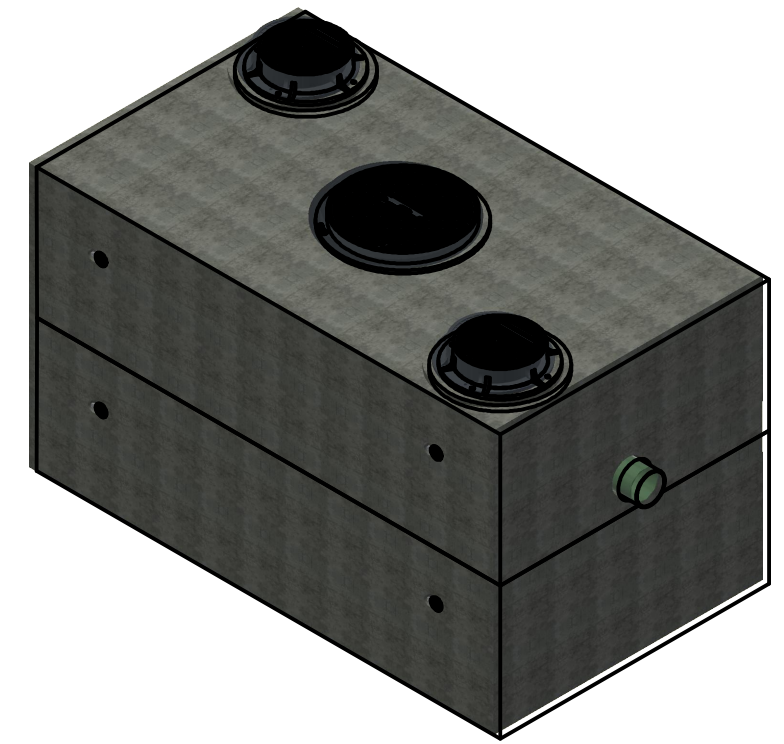


PART LIST			
ITEM	QTY	PART NUMBER	WEIGHT
1	1	4212 Vault - Bottom Section	11,000 kg.
2	1	4212 Vault - Top Section	12,780 kg.

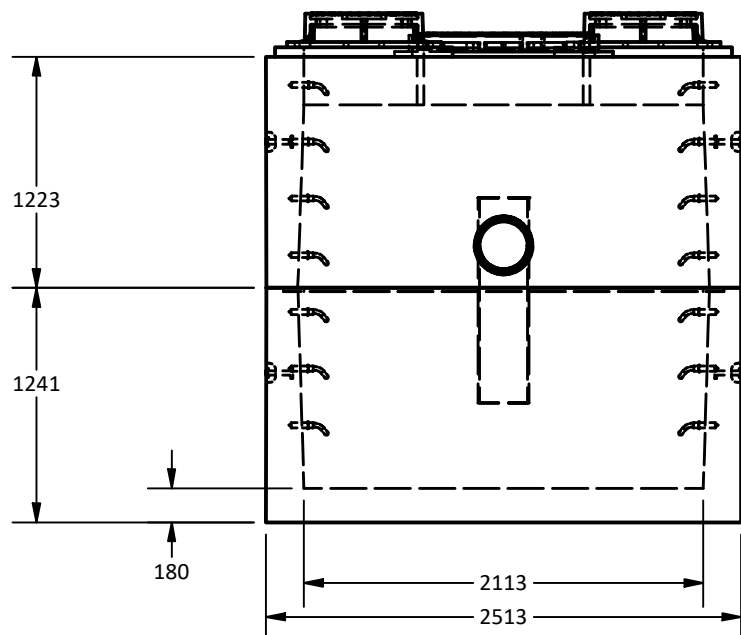
- Notes:
- 4212 Oil interceptor manufactured to meet AASHTO HS20/BCL-625 live loading.
 - Concrete vault designed for the following earth covers:
 - Minimum: 0 m.
 - Maximum: 1.2 m.
 - Unit supplied with rough cores for Inlet/Outlet as required.
 - Unit supplied with opening for access as required.
 - Unit supplied with ladder rungs as required.
 - Unit supplied with lifting insert as required.
 - Oil interceptor c/w 102 mm thick concrete baffles as shown.
 - Unit has a maximum 9,740 liter [9.74 m³] capacity.
 - Minimum rebar yield strength: 414 MPa.
 - Minimum concrete strength: 35 MPa.
 - PVC T required by design, supplied and installed by others in field.
 - All dimensions are in millimeters.



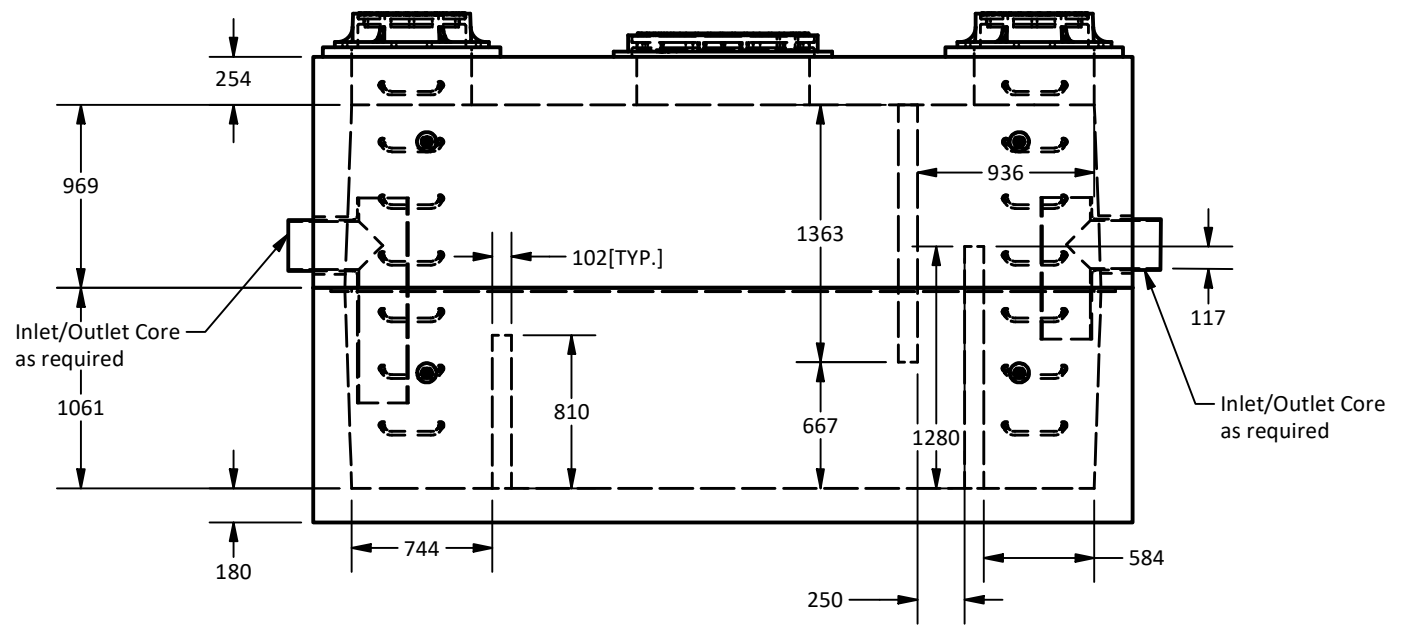
Plan View



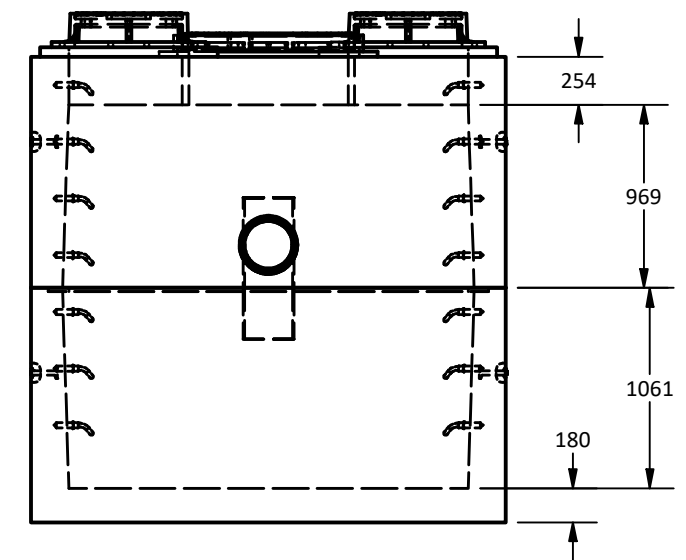
Isometric View



West View



Elevation View



East View

Langley Concrete Group is a certified Q-Cast Plant, an American Concrete Pipe Association Third Party Certification for the manufacture of Pipe, Manhole, Box Culvert & Precast Items.

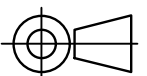


Quality Assurance of products manufactured by The Langley Concrete Group has been verified by the following third party certification programs




All Dimensions are in Millimeters. Unless otherwise Stated

Projection Method: THIRD ANGLE



THE Langley CONCRETE GROUP

www.langleyconcretegroup.com

LANGLEY (604) 533-1656
VICTORIA (250) 478-9581
CHILLIWACK 1-800 667-9600

This drawing is the property of the Langley Concrete Group of Companies. All information contained herein is confidential and may not be used in whole or in part without written permission from the owner

DESCRIPTION:

4212 Oil Interceptor [API Style]
Unit Designed for Max Depth of 1.2m
BCL625 Loading

DRAWN BY: SR		JOB NO.
CHK BY: KS		DWG NO: 4212-API-1.0
DATE: Sep.26, 2018		
SCALE: 1:40		
SIZE: 11 x 17	REV.	SHEET 1 OF 1