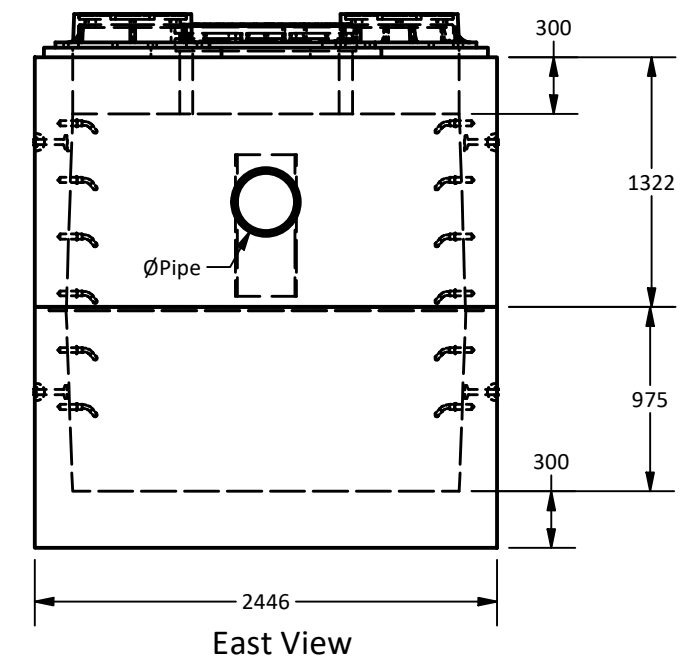
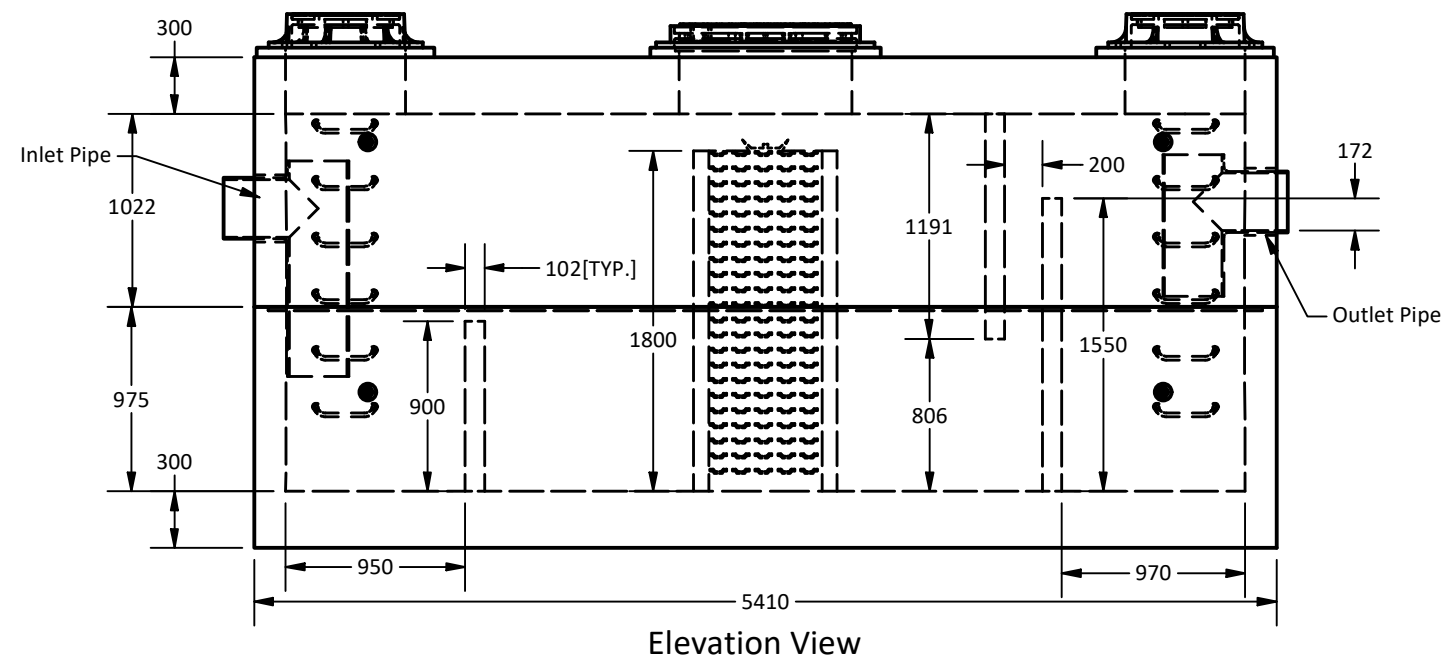
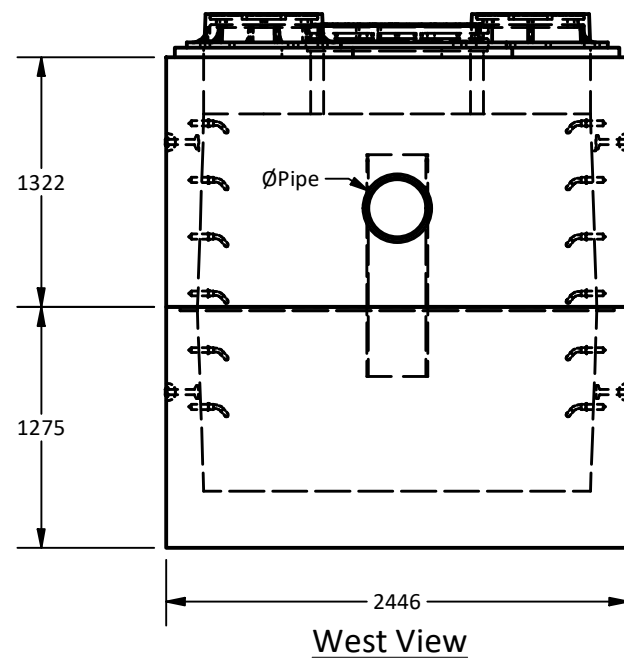
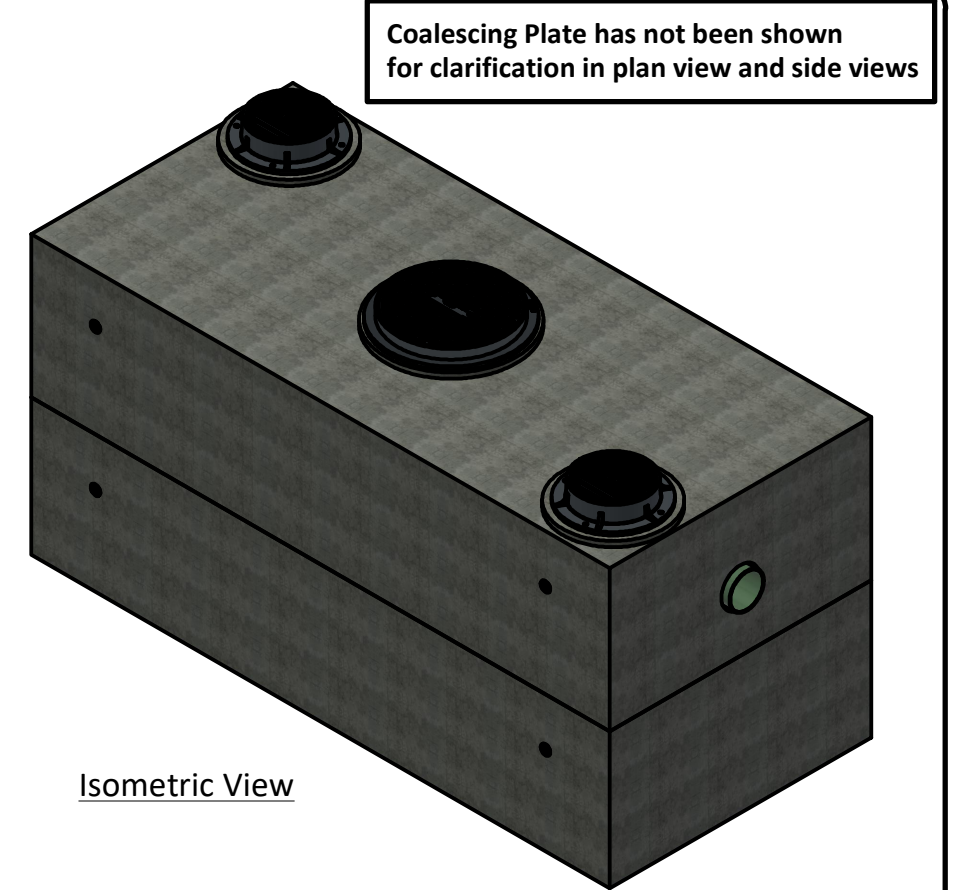
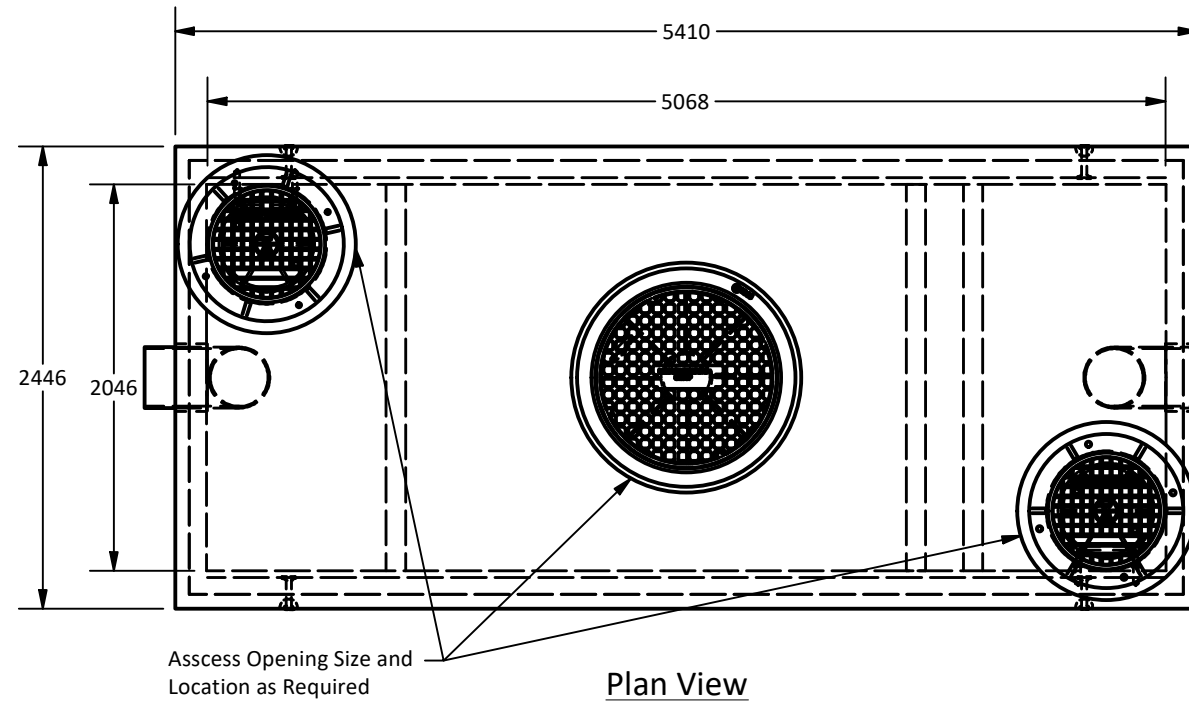


**Total of 42 Coalescing Media Units to be Supplied for this Order**

PART LIST			
ITEM	QTY	PART NUMBER	WEIGHT
1	1	5212 Vault - Bottom	17,920 kg.
2	1	5212 Vault - Top	15,600 kg.

- Notes:
- 5212 Oil interceptor manufactured to meet AASHTO HS20/BCL-625 live loading.
  - Concrete vault designed for the following earth covers:
    - Minimum: 0 m.
    - Maximum: 2.5 m.
  - Unit supplied with opening for access as required.
  - Unit supplied with rough cores for inlet/outlet as required.
  - Unit supplied with ladder rungs as required.
  - Unit supplied with lifting insert as required.
  - Oil interceptor c/w 102 mm thick concrete baffles as shown.
  - Unit has a maximum 13,020 liter [ 13.02 m<sup>3</sup>] capacity.
  - Unit design to:
    - Temp.: 0°C.
    - Oil S.G.: 0.85.
    - Influent oil = 100 mg/l.
    - Effluent oil <=15 mg/l.
    - Max flow: 58.4 l/sec.
  - Minimum rebar yield strength: 414 MPa.
  - Minimum concrete strength: 35 MPa.
  - PVC T required by design, supplied and installed by others in field.
  - All dimensions are in millimeters.



Langley Concrete Group is a certified Q-Cast Plant, an American Concrete Pipe Association Third Party Certification for the manufacture of Pipe, Manhole, Box Culvert & Precast Items.



Quality Assurance of products manufactured by The Langley Concrete Group has been verified by the following third party certification programs



All Dimensions are in Millimeters. Unless otherwise Stated

Projection Method: THIRD ANGLE



LANGLEY (604) 533-1656  
VICTORIA (250) 478-9581  
CHILLIWACK 1-800 667-9600

This drawing is the property of the Langley Concrete Group of Companies. All information contained herein is confidential and may not be used in whole or in part without written permission from the owner

DESCRIPTION:

5212 Coalescing Plate Oil Interceptor  
8mm Spacing

DRAWN BY:

SR

JOB NO.

CHK BY:

KS

DWG NO:

5212-COI-8

DATE:

Sep.28, 2018

SCALE:

1:40

SIZE

11 x 17

REV.

SHEET 1 OF 1