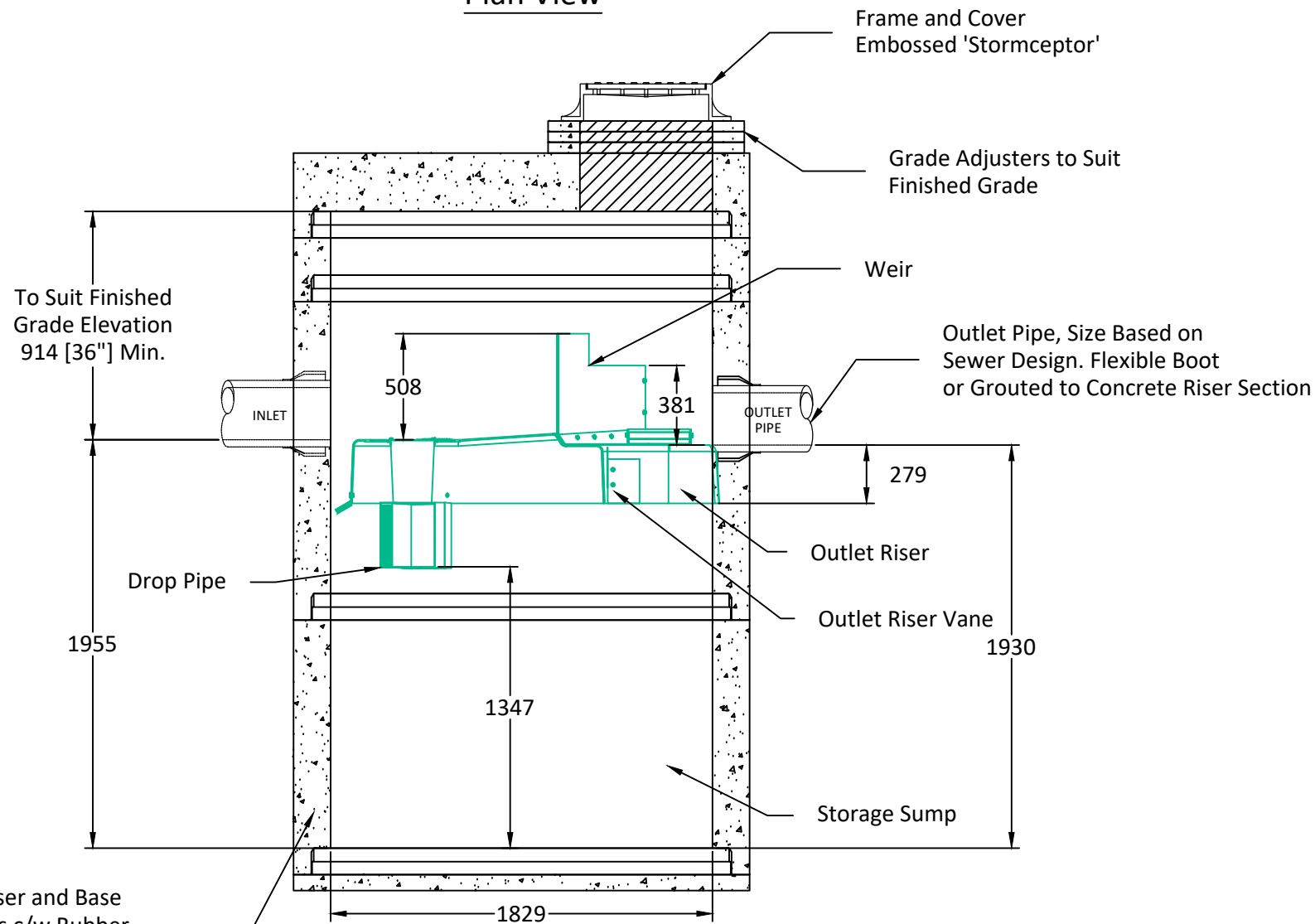


Plan View



Elevation View

Concrete Riser and Base Components c/w Rubber Gasket for Joints. Manufactured to CSA Standard.

Notes:

- *Maximum Surface Loading Rate (SLR) into lower chamber through drop pipe is 1135 L/min/m² (27.9 gpm/ft²) for Stormceptor EF6 and 535 L/min/m² (13.1 gpm/ft²) for Stormceptor EFO6 (oil capture configuration).
- 1. Ø1829 mm Manhole manufactured to ASTM C478 & CSA A257.4 Specifications.
- 2. Stormceptor EF6 to be supplied in components as shown.
- 3. Unit designed to withstand BCL-625 / HS20 live loading.
- 4. Unit c/w cores for inlet/outlet as shown.
- 5. Unit c/w lifting inserts as required. Starcon style min. 5T/140mm lifting inserts to be used.
 - Note: Sling angle to the vertical no more than 15°.
- 6. Unit supplied with step opening as required.
- 7. Minimum concrete strength:
 - Barrel: 30 MPa.
 - Lid & Base: 35 MPa.
- 8. Unit supplied with Tylox Super Seal Gasket System for water and soil/silt tight gasket and joint to meet or exceed ASTM C443, ASTM C1619 and CSA A-257.3.
- 9. Minimum rebar yield strength: 414 MPa. (Steel Grade: CSA 30.18-400 Weldable)
- 10. Minimum WWF yield strength: 448 MPa. (Steel Grade: ASTM A1064)
- 11. Barrels configuration's subject to change based on availability.
- 12. All dimensions are in millimeters unless otherwise specified.

<p>Langley Concrete Group is a certified Q-Cast Plant, an American Concrete Pipe Association Third Party Certification for the manufacture of Pipe, Manhole, Box Culvert & Precast Items.</p>	<p>All Dimensions are in Millimeters. Unless otherwise Stated</p> <p>Projection Method: THIRD ANGLE</p>	<p>The LANGLEY CONCRETE Group of Companies www.langleyconcretegroup.com</p>	<p>DESCRIPTION:</p> <p style="text-align: center;">EF 6 Standard Drawing</p>	DRAWN BY: SR	JOB NO.: #####
				CHK BY: KS	DWG NO: EF6
<p>Quality Assurance of products manufactured by The Langley Concrete Group has been verified by the following third party certification programs</p>				DATE: Dec 21, 2021	ST NO.: #####
				SCALE: 1:25	MU NO.: #####
<p>LANGLEY (604) 533-1656 VICTORIA (250) 478-9581 CHILLIWACK 1-800 667-9600</p>				<p>LCG Products are held to the governing ASTM, and CSA specification & tolerances.</p>	