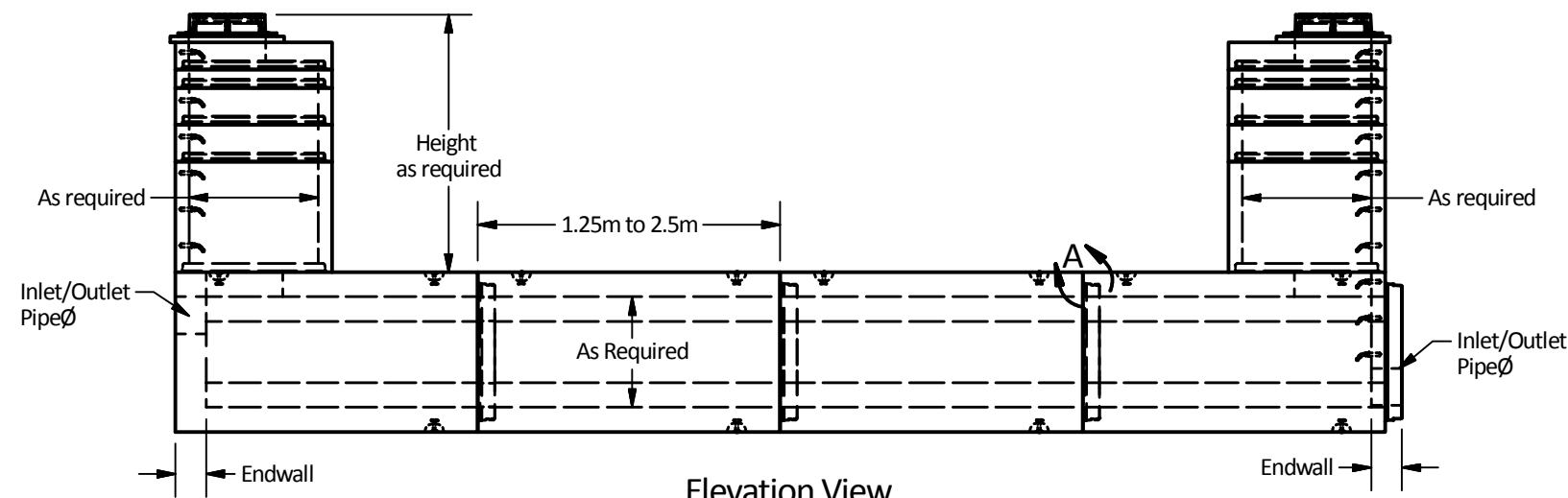
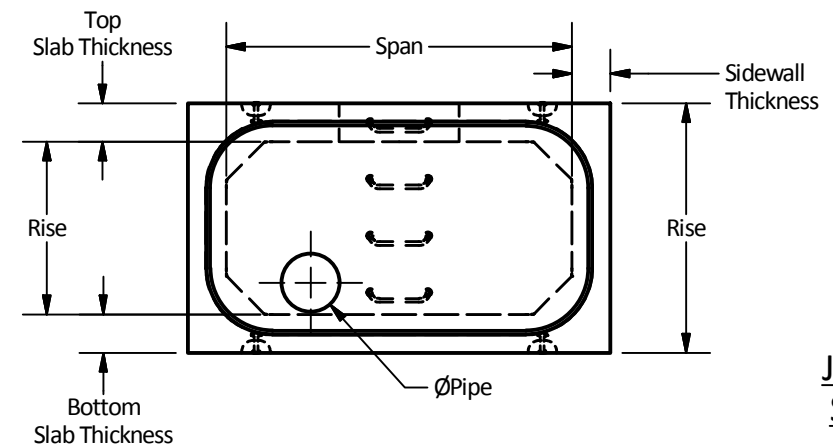


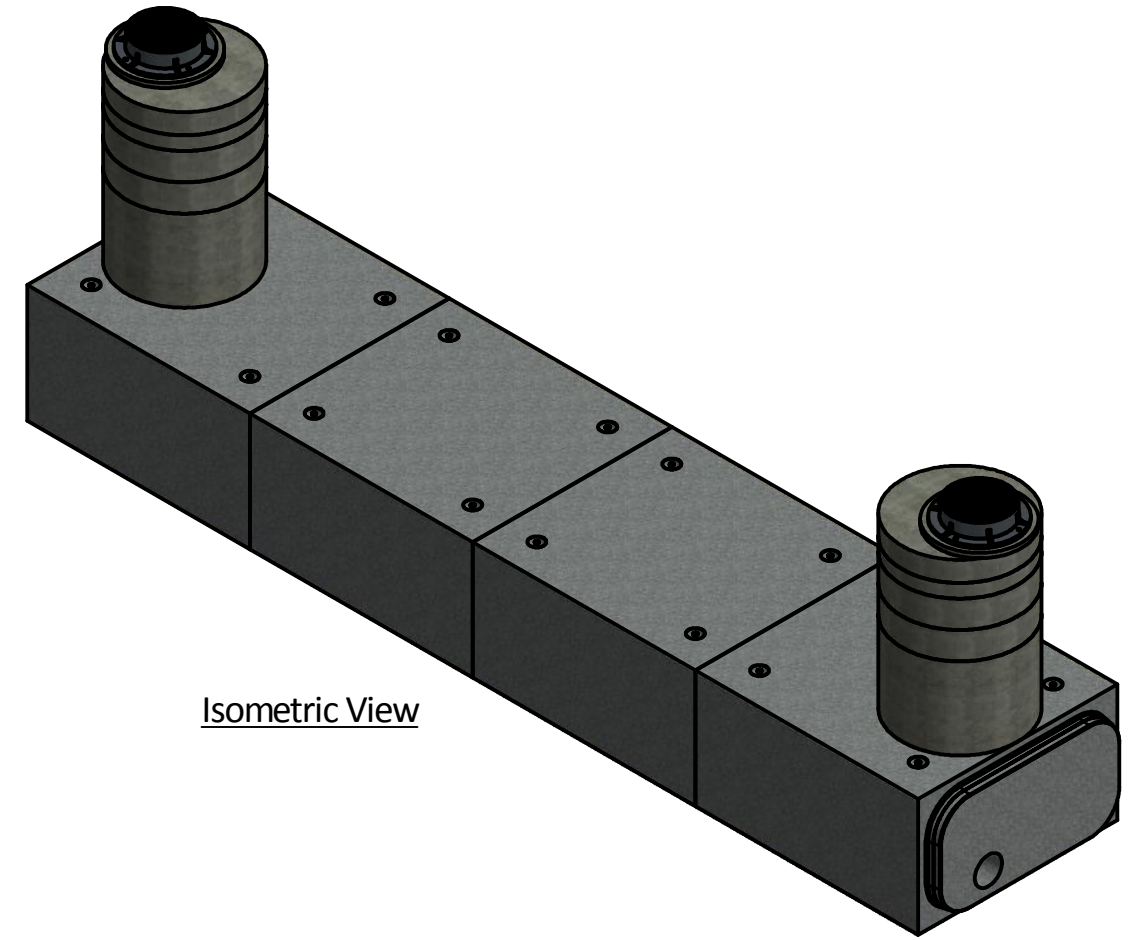
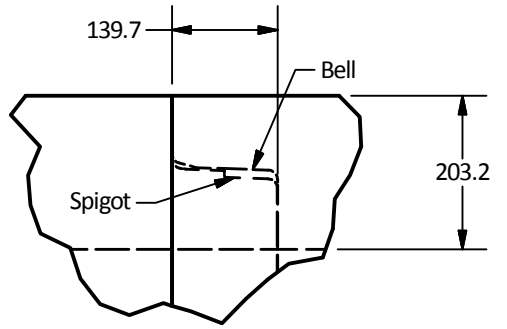
Plan View



Elevation View



Detail A  
Joint Detail  
Scale 1:10



Notes:

1. Box Culverts to be fabricated as required for the project.
2. Box Culverts are designed to withstand required live loads and dead loads. Design can be modified for any specific application, please contact LCG on board Engineering Staff or Sales Staff for more information.
3. The factory installed 'Super Seal' Pre-Lubricated Gasketed Joints eliminated the need to grout box culvert joints to achieve Water-Tight Seal and allows for a simpler, quicker installation of box culvert for use as detention tanks. If installed proper joints will hold 5-13 p.s.i hydrostatic pressure, contact LCG staff for more details.
4. Box culvert detention tanks can be configured for differing access sizes, inlet/outlet cores for pipes, etc.
5. Box culvert detention tanks are easily maintained through access ports provided in tops.
6. Box culverts are produced in a wide range of sizes according to amount of volume to be detained.
7. Unit can be supplied w/ ladder rungs.
8. Box culvert supplied w/ lifting insert as required. Starcon style lifting inserts to be used. Note: Sling angle to the vertical no more than 15°.
9. Minimum WWF yield strength: 414 MPa.
10. Minimum concrete strength: 35 MPa.
11. All dimensions are in millimeters.

Langley Concrete Group is a certified Q-Cast Plant, an American Concrete Pipe Association Third Party Certification for the manufacture of Pipe, Manhole, Box Culvert & Precast Items.

Quality Assurance of products manufactured by The Langley Concrete Group has been verified by the following third party certification programs

All Dimensions are in Millimeters. Unless otherwise Stated

Projection Method: THIRD ANGLE

**THE Langley CONCRETE GROUP**

www.langleyconcretegroup.com

LANGLEY (604) 533-1656  
VICTORIA (250) 478-9581  
CHILLIWACK 1-800 667-9600

This drawing is the property of the Langley Concrete Group of Companies. All information contained herein is confidential and may not be used in whole or in part without written permission from the owner

DESCRIPTION:  
Detention Tank Application  
Using Precast Reinforced Concrete Box Culvert with Pre-Lubricated TSS Gasketed Joint

DRAWN BY: SR	JOB NO.
CHK BY: KS	DWG NO: Box-Det
DATE: July.24, 2018	
SCALE: 1:60	
SIZE 11 x 17	REV. SHEET 1 OF 1