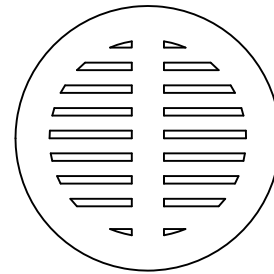


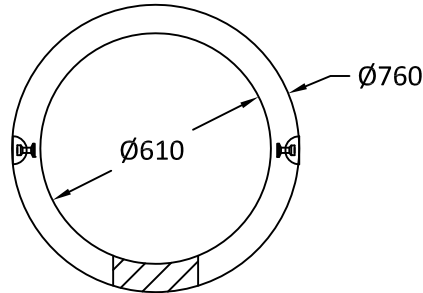
'TR22B' H2O live loading cast iron grate

Weight: 63 Kgs.

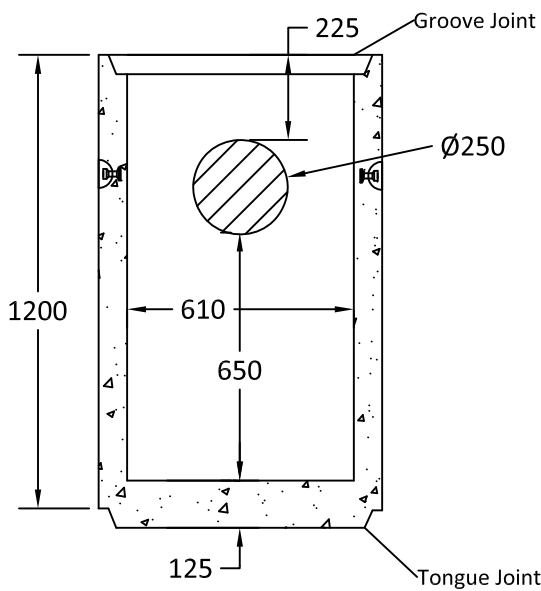


Non H2O slotted concrete lid

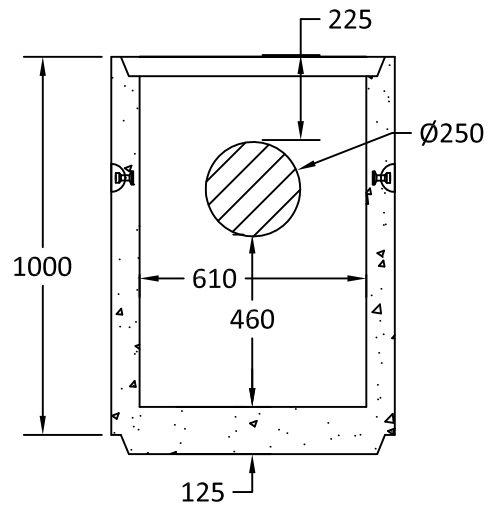
Weight: 45 Kgs.



Plan View of Lawnbasins



Section Views of Lawnbasins  
Weight: 600 kgs



Section Views of Lawnbasins  
Weight: 500 kgs

Notes:

1. Typical Lawnbasins are manufactured for non-traffic or occasional loads.
2. Comes with 250mm core for outlet pipe.
3. Comes with optional cast in base.
4. Trapping hood pins available on request.
5. Cast iron or concrete grates fit flush in top / groove joint.
6. Min. concrete strength: 30 MPa.
7. All dimensions are in millimeters.



Quality Assurance of products manufactured by The Langley Concrete Group has been verified by the following third party certification programs:



The LANGLEY CONCRETE Group of Companies  
www.langleyconcretegroup.com

DESCRIPTION:

Standard Ø600  
Lawn Basings

LANGLEY (604) 533-1656 VICTORIA (250) 478-9581 CHILLIWACK 1-800 667-9600

DRAWN BY: JAO	JOB NO.: N/A
CHK BY: KS	DWG NO.: Lb-2
DATE: Mar. 25, 2002	REV. BY: CC
SCALE: 1:16	Aug. 13, 2018
<small>This drawing is the property of the Langley Concrete Group of Companies. All information contained herein is confidential and may not be used in whole or in part without written permission from the owner.</small>	
LCG Products are held to the governing ASTM, and CSA specification & tolerances.	