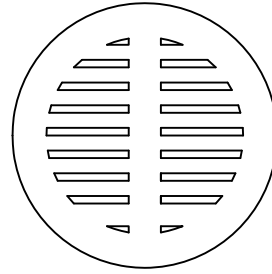


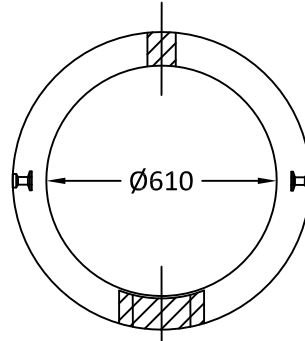
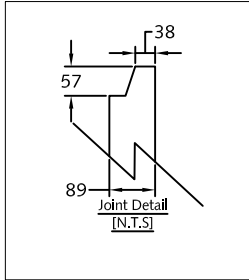
'TR22B' H20 Loading cast iron grate

Mass: 63 kg.

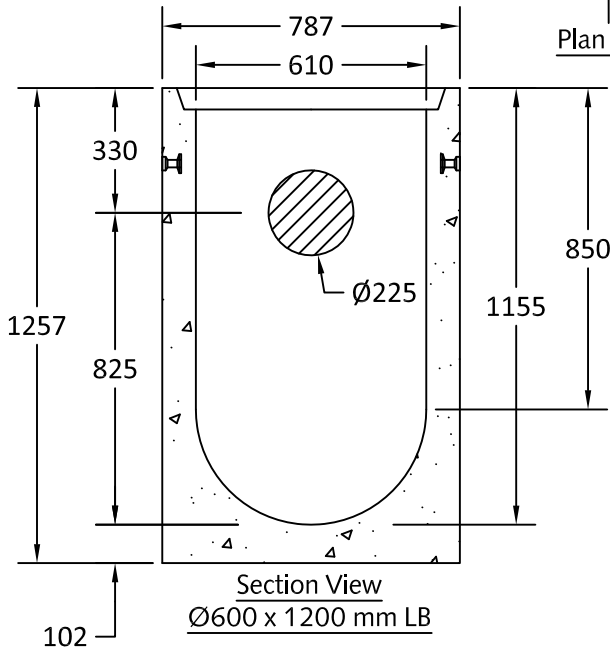


Non H20 Slotted concrete lid

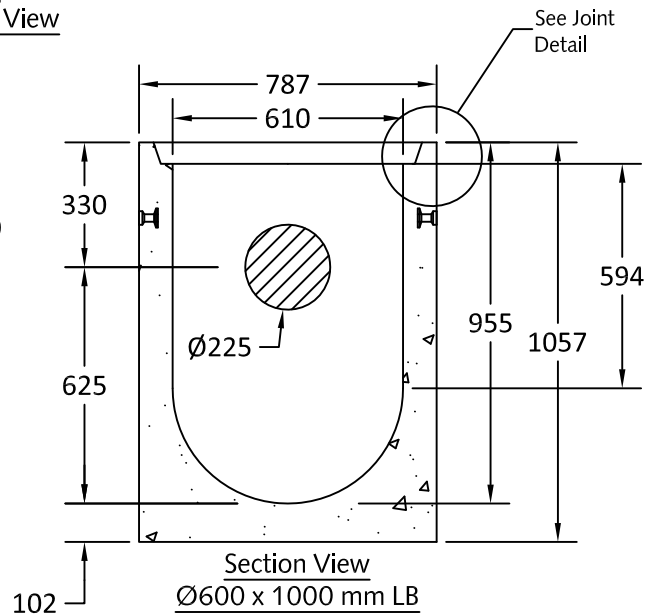
Mass: 45 kg.



Plan View



Section View  
Ø600 x 1200 mm LB



Section View  
Ø600 x 1000 mm LB

Notes:

1. Ø600 x 1200 & Ø600 x 1000 mm Lawn Basins are manufactured for non-traffic or occasional loading as shown.
2. Lawn Basins are supplied w/ Ø225 mm core as shown.
3. Lawn basins are supplied w/ 102 mm thick monolithic cast-in base as shown.
4. Trapping hood pins available on request.

5. Cast iron or concrete grates are supplied to fit flush in top of the groove joint as shown.
6. Unit supplied w/ Starcon lifting inserts as shown.
7. Approximate mass:
  - Ø600 x 1200 mm w/ base: 755 kg.
  - Ø600 x 1000 mm w/ base: 695 kg.
8. Minimum concrete strength: 27.6 MPa.
9. All dimensions are in millimeters.



Quality Assurance of products manufactured by The Langley Concrete Group has been verified by the following third party certification programs:



The LANGLEY CONCRETE Group of Companies

www.langleyconcretegroup.com

DESCRIPTION:

Ø600 mm- Lawn Basins  
Generic Drawing

LANGLEY (604) 533-1656 VICTORIA (250) 478-9581 CHILLIWACK 1-800 667-9600

DRAWN BY: KS

JOB NO.: N/A

CHK BY: SW/TM

DWG NO: LB600-1.0

DATE: Feb. 22, 2012

REV. BY: CC  
Aug. 13, 2018

SCALE: 1:20

This drawing is the property of the Langley Concrete Group of Companies. All information contained herein is confidential and may not be used in whole or in part without written permission from the owner.

LCG Products are held to the governing ASTM, and CSA specification & tolerances.