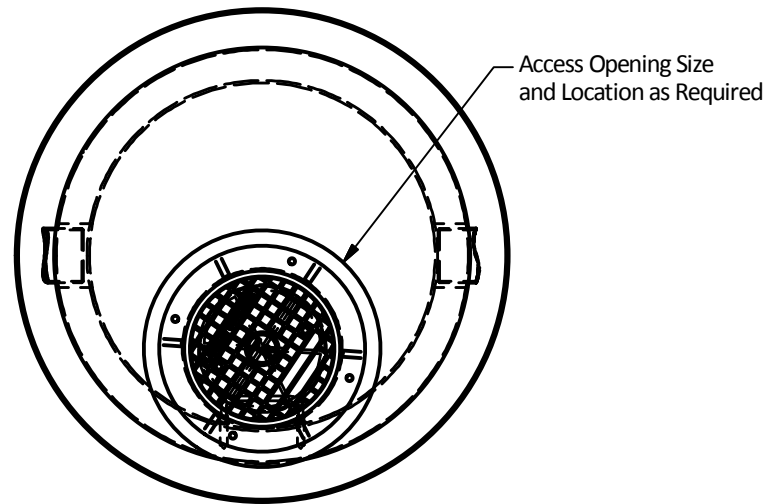
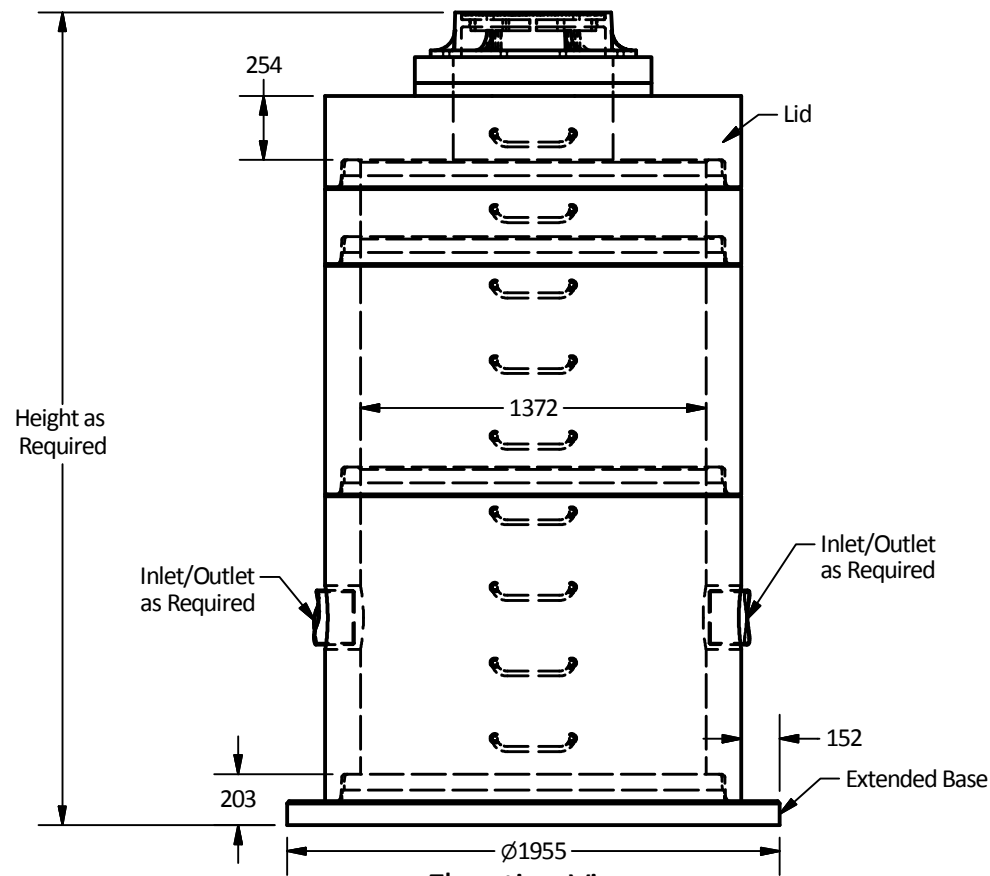


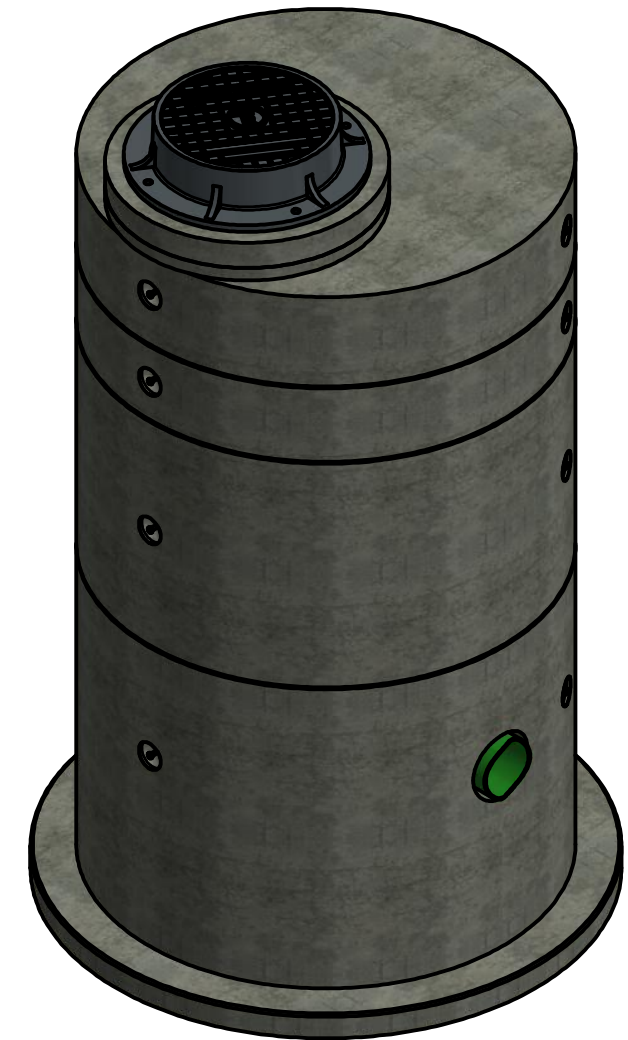
- Note:
1. Ø1350 Manhole manufactured to ASTM C478 specification.
 2. Concrete designed to withstand HS20, BCL 625 live loadings.
 3. Unit supplied with cores as required.
 4. Unit supplied with ladder rungs as required.
 5. Unit supplied with lifting insert as required.
 6. Unit supplied with access opening as required.
 7. WWF minimum yield strength: 448 MPa.
 8. Minimum rebar yield strength: 414 MPa.
 9. Minimum concrete strength:
 - MH Barrel: 27.6 MPa.
 - Lid & Base: 35 MPa.
 10. All reinforcing to have minimum 25 mm of concrete cover.
 11. All dimensions are in millimeters.



Plan View



Elevation View



Isometric View

| PART LIST | | | |
|-----------|-------------|---------------|-------------|
| ITEM | QTY | PART NUMBER | WEIGHT |
| 1 | 1 | 1350 Lid | 1,440 kg. |
| 2 | As Required | 1350 Manhole | 1,645 kg/m. |
| 3 | 1 | 1350 Ext-Base | 1,195 kg. |

Langley Concrete Group is a certified Q-Cast Plant, an American Concrete Pipe Association Third Party Certification for the manufacture of Pipe, Manhole, Box Culvert & Precast Items.

Quality Assurance of products manufactured by The Langley Concrete Group has been verified by the following third party certification programs

All Dimensions are in Millimeters. Unless otherwise Stated

Projection Method: THIRD ANGLE

THE Langley CONCRETE GROUP

www.langleyconcretegroup.com

LANGLEY (604) 533-1656
VICTORIA (250) 478-9581
CHILLIWACK 1-800 667-9600

This drawing is the property of the Langley Concrete Group of Companies. All information contained herein is confidential and may not be used in whole or in part without written permission from the owner

DESCRIPTION:

Ø1350 Manhole with Extended Base

| | |
|--------------------|--------------------------|
| DRAWN BY: SR | JOB NO. |
| CHK BY: KS | DWG NO: MH-1350-Ext Base |
| DATE: Sep.14, 2017 | |
| SCALE: 1:30 | |
| SIZE: 11 x 17 | REV. |
| | SHEET 1 OF 1 |