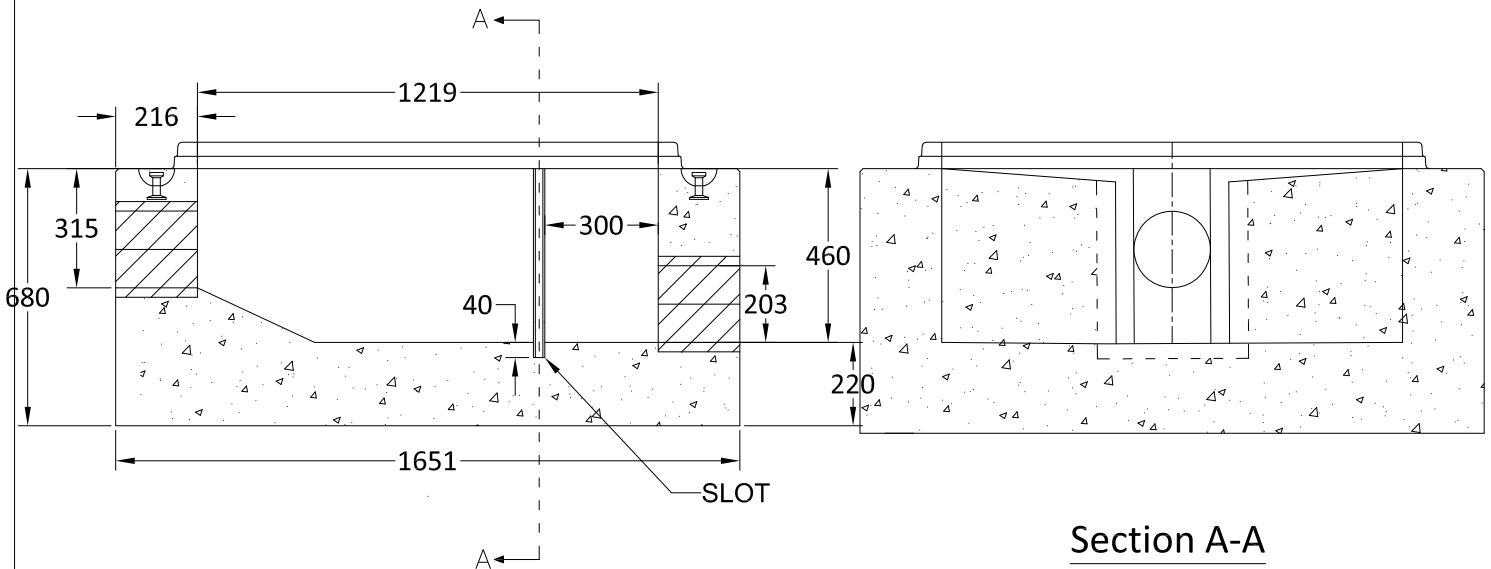


**Plan View**



**Elevation View**

**Section A-A**

**Notes:**

1. Ø1200 mm Manhole manufactured to ASTM C478 Specifications.
2. Unit designed to withstand HS20/BCL 625 live loading.
3. Unit c/w cores for inlet/outlet as required.
4. Unit c/w ladder rungs as required.
5. Unit supplied w/ lifting inserts as required.
6. Minimum concrete strength:
  - MH Barrel: 27.6 MPa.
  - Lid & Base: 35 MPa.
7. Minimum rebar yield strength: 414 MPa.
8. Minimum WWF yield strength: 448 MPa.
9. Approximate mass: 3600 kg.
10. All dimensions are in millimeters.
11. Barrels Configuration's Subject to change base on the availability.



Quality Assurance of products manufactured by The Langley Concrete Group has been verified by the following third party certification programs:



The LANGLEY CONCRETE Group of Companies  
www.langleyconcretegroup.com

LANGLEY (604) 533-1656 VICTORIA (250) 478-9581 CHILLIWACK 1-800 667-9600

**DESCRIPTION:**

Ø1200mm  
Sanitary Sampling Manhole

DRAWN BY:	BY	JOB NO.:####-##
CHK BY:	KS	DWG NO.: SD-257
DATE:	May 1, 2019	REV.
SCALE:	1:20	MU NO.:####-##
<small>This drawing is the property of the Langley Concrete Group of Companies. All information contained herein is confidential and may not be used in whole or in part without written permission from the owner.</small>		LCG Products are held to the governing ASTM, and CSA specification & tolerances.