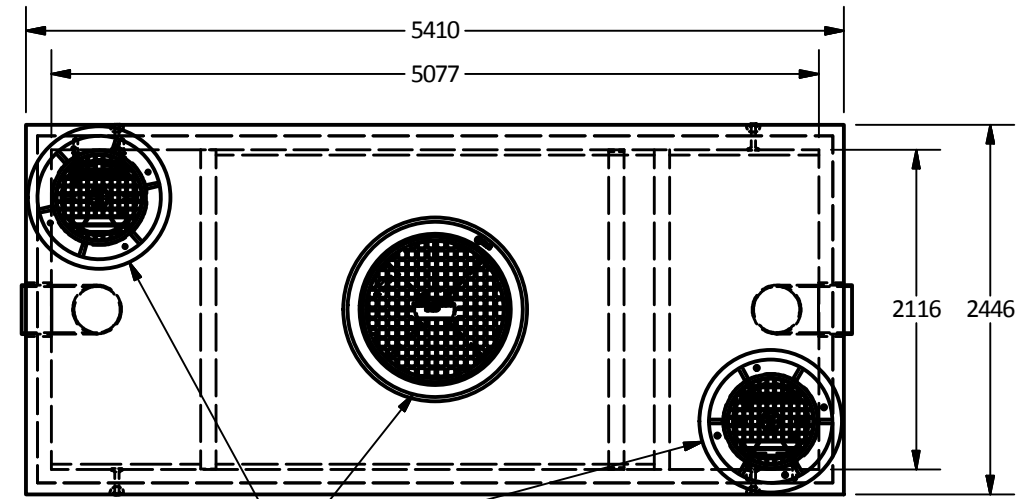
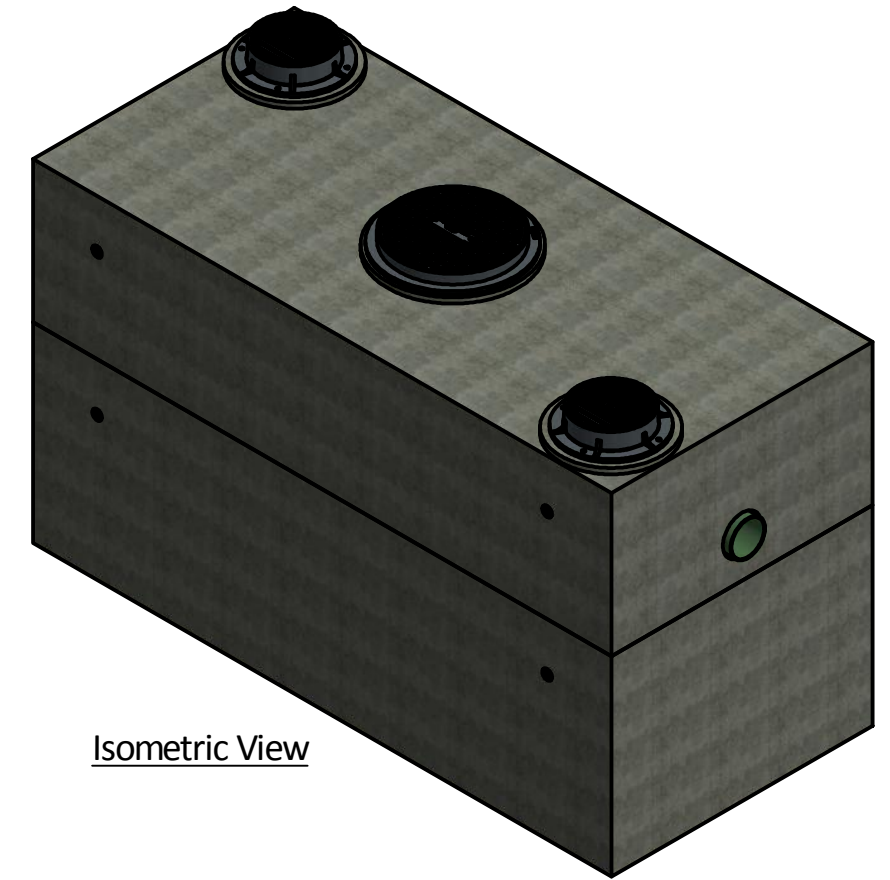


PART LIST			
ITEM	QTY	PART NUMBER	WEIGHT
1	1	5212.5 Vault - Bottom	22,000 kg.
2	1	5212.5 Vault - Top	15,560 kg.

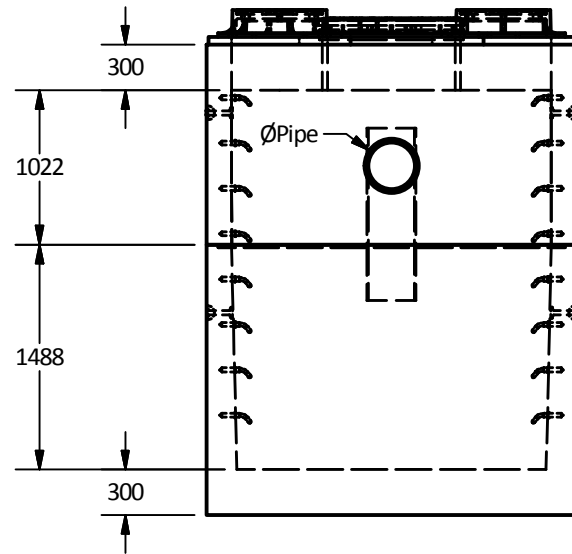
- Notes:
- 5212.5 Oil interceptor manufactured to meet AASHTO HS20/BCL-625 live loading.
  - Concrete vault designed for the following earth covers:
    - Minimum: 0 m.
    - Maximum: 2.5 m.
  - Unit supplied with opening for access as required.
  - Unit supplied with rough cores for inlet/outlet as required.
  - Unit supplied with ladder rungs as required.
  - Unit supplied with lifting insert as required.
  - Oil interceptor c/w 102 mm thick concrete baffles as shown.
  - Unit has a maximum 17,800 liter [ 17.8 m<sup>3</sup>] capacity.
  - Minimum rebar yield strength: 414 MPa.
  - Minimum concrete strength: 35 MPa.
  - PVC T required by design, supplied and installed by others in field.
  - All dimensions are in millimeters.



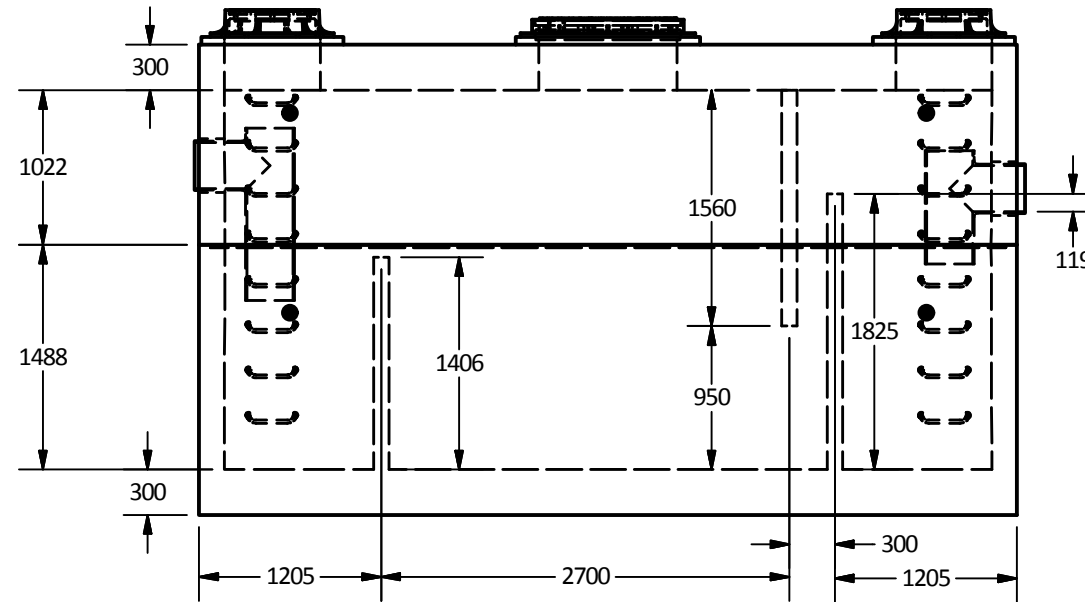
Access Opening Size and Location as Required  
**Plan View**



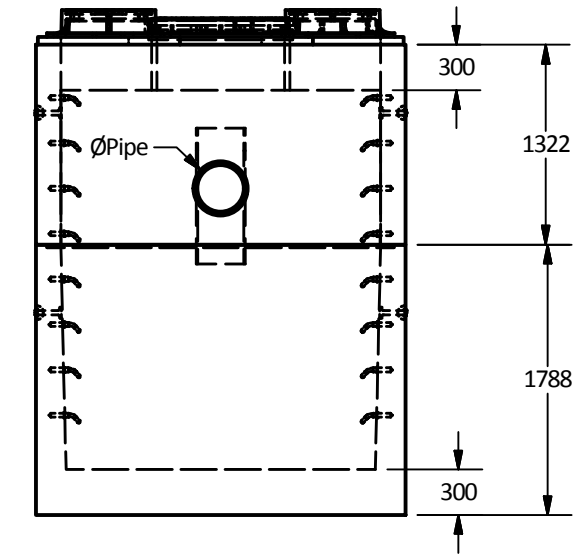
**Isometric View**



**West View**



**Elevation View**



**East View**

Langley Concrete Group is a certified Q-Cast Plant, an American Concrete Pipe Association Third Party Certification for the manufacture of Pipe, Manhole, Box Culvert & Precast Items.



Quality Assurance of products manufactured by The Langley Concrete Group has been verified by the following third party certification programs



All Dimensions are in Millimeters. Unless otherwise Stated

Projection Method: THIRD ANGLE



This drawing is the property of the Langley Concrete Group of Companies. All information contained herein is confidential and may not be used in whole or in part without written permission from the owner

DESCRIPTION:

**5212.5 Oil Interceptor  
API Style**

DRAWN BY: SR

CHK BY: KS

DATE: Oct.01, 2018

SCALE: 1:50

SIZE: 11 x 17

JOB NO.

DWG NO: 5212.5-API

SHEET 1 OF 1