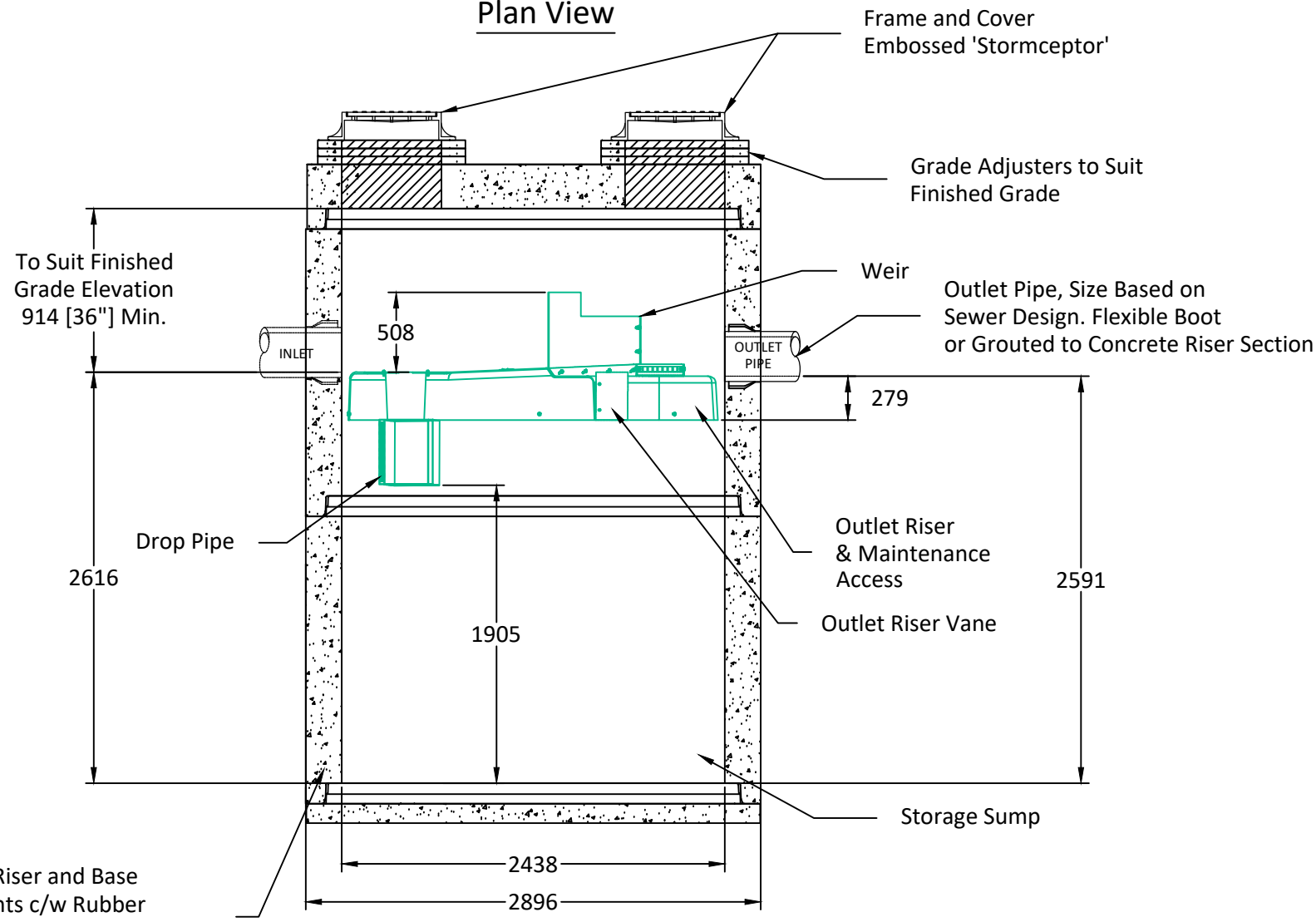


Plan View



Elevation View

Concrete Riser and Base Components c/w Rubber Gasket for Joints. Manufactured to CSA Standard.

Notes:

- *Maximum Surface Loading Rate (SLR) into lower chamber through drop pipe is 1135 L/min/m² (27.9 gpm/ft²) for Stormceptor EF8 and 535 L/min/m² (13.1 gpm/ft²) for Stormceptor EFO8 (oil capture configuration).
- 1. Ø2400 mm Manhole manufactured to ASTM C 478 Specifications.
- 2. STC-EF8 to be supplied in components as shown.
- 3. Unit designed to withstand HS20/BCL625 live loading.
- 4. Unit c/w cores for inlet/outlet as shown.
- 5. Unit supplied w/ lifting inserts as required.
- 6. Unit supplied with step opening as required.
- 7. Minimum concrete strength:
 - Barrel: 30 MPa.
 - Lid & Base: 35 MPa.
- 8. Minimum rebar yield strength: 414 MPa. (Steel Grade: CSA 30.18-400 Weldable)
- 9. Unit supplied with Tylox Super Seal Gasket System for water and soil/silt tight gasket and joint to meet or exceed ASTM C443, ASTM C1619 and CSA A-257.3.
- 10. Minimum WWF yield strength: 448 MPa.
- 11. Barrels configuration's subject to change based on availability.
- 12. All dimensions are in millimeters.

   <p>Quality Assurance of products manufactured by The Langley Concrete Group has been verified by the following third party certification programs;</p>	 <p>The LANGLEY CONCRETE Group of Companies www.langleyconcretegroup.com</p>	DESCRIPTION: <p style="text-align: center;">EF 8 Standard Drawing</p>	DRAWN BY: SR	JOB NO.:####-##
			CHK BY: KS	DWG NO: EF8
			DATE: Apr 27, 2020	REV.
			SCALE: 1:25	MU NO.:####-##
LANGLEY (604) 533-1656 VICTORIA (250) 478-9581 CHILLIWACK 1-800 667-9600			LCG Products are held to the governing ASTM, and CSA specification & tolerances.	