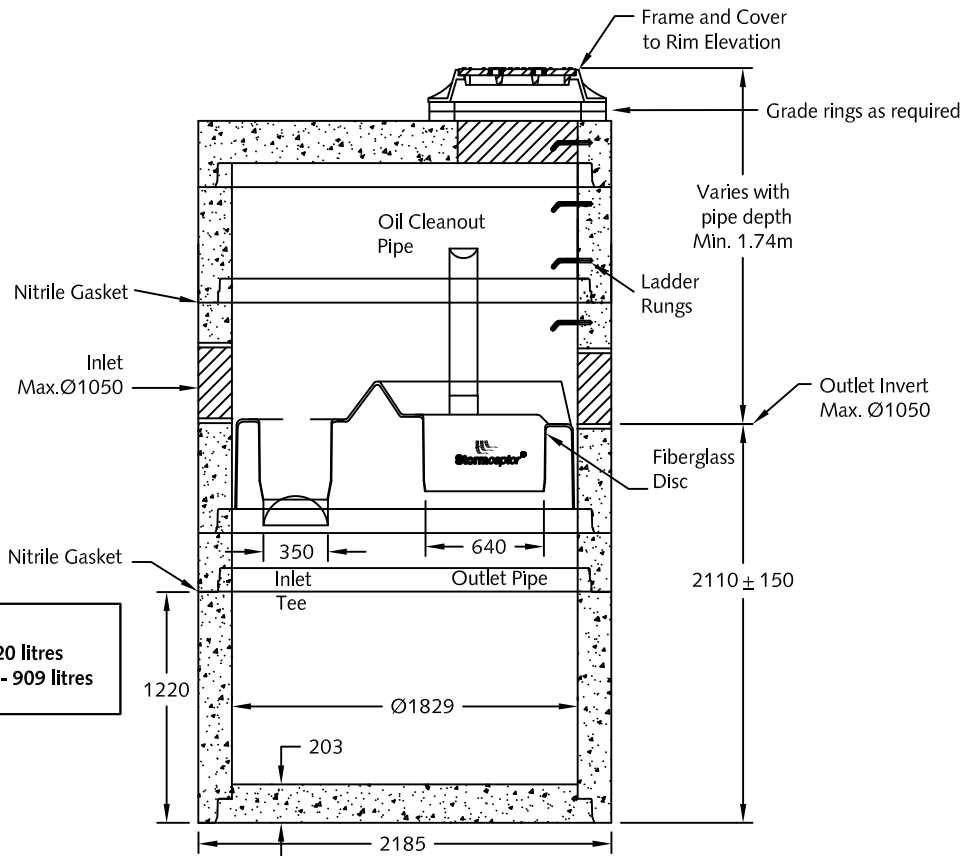


Plan View w/Pipe Orientation



Capacities:  
Sediment - 3820 litres  
Hydrocarbons - 909 litres

Section View w/Elevations

Notes:

- STC 1000 supplied in components to suit site elevations.
- Ø1800mm manhole section w/insert to have inlet/outlet stubs/cores as required.
- Base cast integral with lower section of manhole or provided as separate flat base.
- For designs where pipe invert is < 0.8m below surface, contact sales office.
- Design requires inlet invert 75mm higher than outlet.
- Inlet pipes can be oriented up to 90 ° from outlet, depending on pipe size/type.
- Multiple inlet pipes can be utilized (depending on pipe size/type) up to 180° apart.
- Lid supplied w/Ø635mm access designed to HS-25 live loading.
- Ladder rungs supplied at 300mm spacing as shown.
- Manhole manufactured to ASTM C478 specifications.
- Lifting inserts supplied in manhole sections.
- Approx. weight:  
1840x1220 manhole section with integral base: 5900kgs. [12,980 lbs.]
- Type GU Cement; min. concrete strength: 35MPa.
- Stormceptor protected by Canadian Patent # 2009208, 2137942, 2175277, 2180305.



DESCRIPTION:

Stormceptor STC-1000  
Multi Inlet Design  
www.langleyconcretegroup.com

DRAWN BY:	JAO	ORIGIN:	CHWK
SCALE:	1:40	DRAWING NO.:	STC1000-MULTI
DATE:	May/04/2010		
<p>This drawing is the property of the Langley Concrete Group of Companies. All information contained herein is confidential and may not be used in whole or in part without written permission from the owner.</p>			