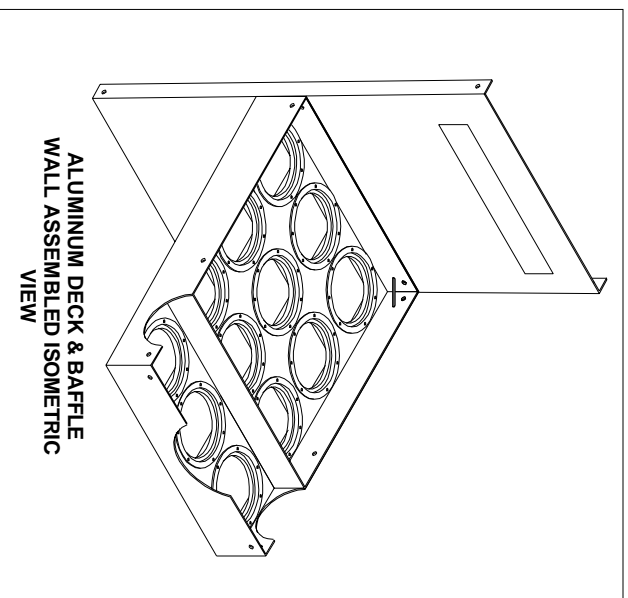
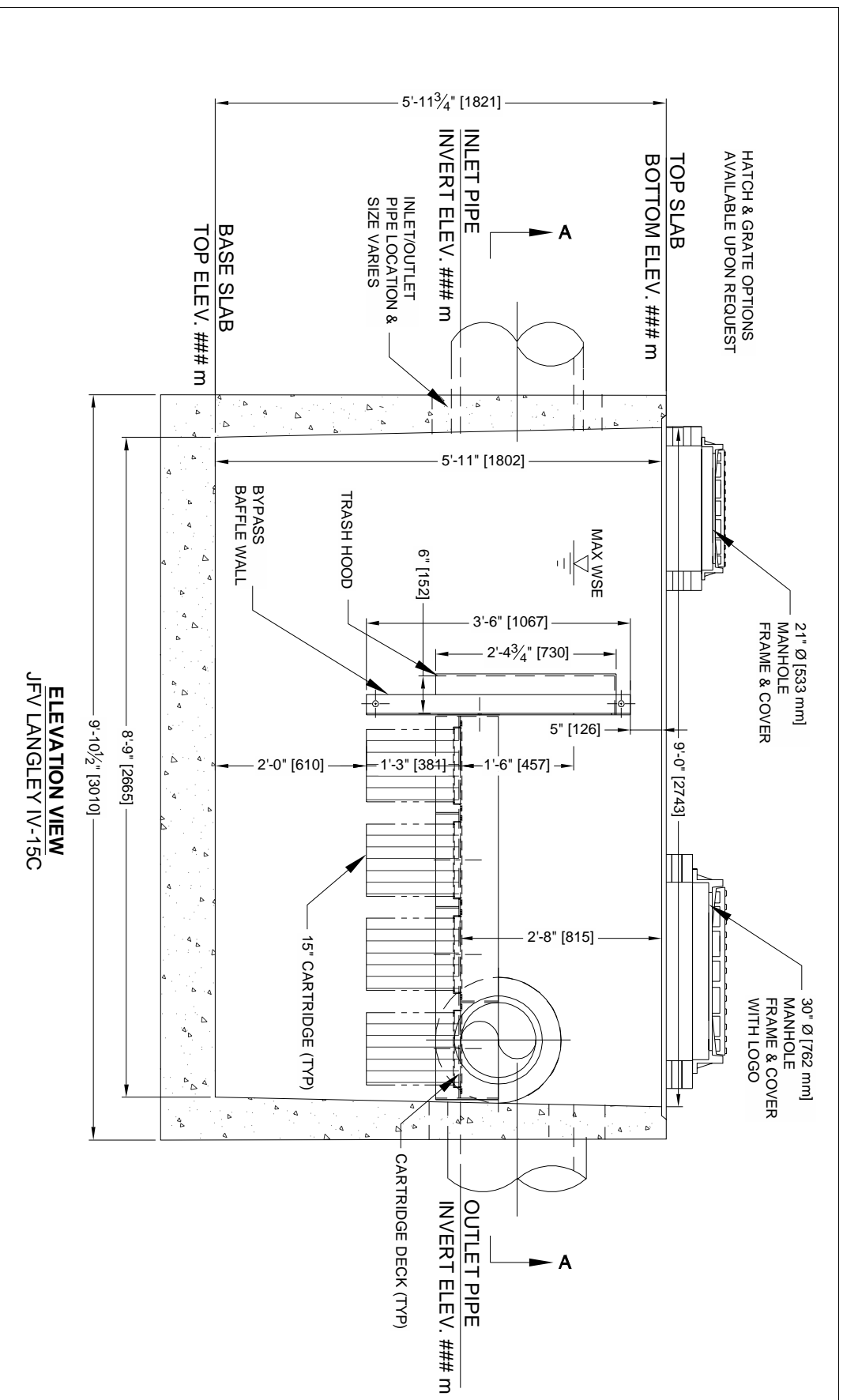


- GENERAL NOTES:**
1. ALL DIMENSIONS INDICATED ARE IN INCHES (MILLIMETERS) UNLESS OTHERWISE SPECIFIED.
  2. JELLYFISH STRUCTURE INLET AND OUTLET PIPE SIZE AND ORIENTATION SHOWN FOR INFORMATIONAL PURPOSES ONLY.
  3. UNLESS OTHERWISE NOTED, BYPASS INFRASTRUCTURE, SUCH AS ALL UPSTREAM DIVERSION STRUCTURES, CONNECTING STRUCTURES, OR PIPE CONDUITS CONNECTING TO COMPLETE THE JELLYFISH SYSTEM SHALL BE PROVIDED AND ADDRESSED SEPARATELY.
  4. DRAWING FOR INFORMATION PURPOSES ONLY. REFER TO ENGINEERS SITE/UTILITY PLAN FOR STRUCTURE ORIENTATION.
  5. NO PRODUCT SUBSTITUTIONS SHALL BE ACCEPTED UNLESS SUBMITTED 10 DAYS PRIOR TO PROJECT BID DATE, OR AS DIRECTED BY THE ENGINEER OF RECORD.

- JELLYFISH STRUCTURE & DESIGN NOTES:**
1. CASTINGS OR DOORS OF THE JELLYFISH MANHOLE STRUCTURE TO EXTEND TO DESIGN FINISH GRADE. DEPTHS IN EXCESS OF 3.65 M (12') MAY REQUIRE OTHER STRUCTURAL ELEMENTS.
  2. CASTINGS AND GRADE RINGS, OR DOORS AND DOOR RISERS, OR BOTH, SHALL BE GROUTED FOR WATERTIGHTNESS.
  3. STRUCTURE SHALL MEET AASHTO HS-20 OR PER APPROVING JURISDICTION REQUIREMENTS, WHICHEVER IS MORE STRINGENT, ASSUMING EARTH COVER OF 0' - 3' AND GROUNDWATER ELEVATION AT, OR BELOW, THE OUTLET PIPE INVERT ELEVATION. ENGINEER OF RECORD TO CONFIRM ACTUAL GROUNDWATER ELEVATION. CASTINGS SHALL MEET AASHTO M306 LOAD RATING AND BE CAST WITH THE IMBRIMUM LOGO.
  4. ALL STRUCTURAL SECTIONS AND PARTS TO MEET OR EXCEED ASTM C-478, ASTM C-443, AND ASTM D-4097 CORRESPONDING TO AASHTO SPECIFICATIONS, AND ANY OTHER SITE OR LOCAL STANDARDS.
  5. CONCRETE RISER SECTIONS FROM BOTTOM TO TOP WILL BE ADDED AS REQUIRED INCLUDING TRANSITION PIECES TO SMALLER DIAMETER RISERS FOR SURFACE ACCESSES WHERE WARRANTED BY SERVICING DEPTH.
  6. IF MINIMUM DEPTH FROM TOP OF CARTRIDGE DECK TO BOTTOM OF STRUCTURAL TOP SLAB CANNOT BE ACHIEVED DUE TO PIPING INVERT ELEVATIONS OR OTHER SITE CONSTRAINTS, ALTERNATIVE HATCH CONFIGURATIONS MAY BE AVAILABLE. HATCH DOORS SHOULD BE SIZED TO PROVIDE FULL ACCESS ABOVE THE CARTRIDGES TO ACCOMMODATE MAINTENANCE.
  7. STEPS TO BE APPROXIMATELY 330 MM (13") APART AND DIMENSIONS MUST MEET LOCAL STANDARDS. STEPS MUST BE INSTALLED AFTER CARTRIDGE DECK IS IN PLACE.
  8. CONFIGURATION OF INLET AND OUTLET PIPE CAN VARY TO MEET SITE'S NEEDS.
  9. IT IS THE RESPONSIBILITY OF OTHERS TO PROPERLY PROTECT THE TREATMENT DEVICE, AND KEEP THE DEVICE OFFLINE DURING CONSTRUCTION. FILTER CARTRIDGES SHALL NOT BE INSTALLED UNTIL THE PROJECT SITE IS CLEAN AND FREE OF DEBRIS, BY OTHERS. THE PROJECT SITE INCLUDES ANY SURFACE THAT CONTRIBUTES STORM DRAINAGE TO THE TREATMENT DEVICE. CARTRIDGES SHALL BE FURNISHED NEW, AT THE TIME OF FINAL ACCEPTANCE.
  10. THIS DRAWING MUST BE VIEWED IN CONJUNCTION WITH THE STANDARD JELLYFISH SPECIFICATION, AND STORMWATER QUALITY FILTER TREATMENT JELLYFISH DOCUMENTS.
- INSTALLATION NOTES**
- A. ANY SUB-BASE, BACKFILL DEPTH, AND/OR ANTI-FLOTATION PROVISIONS ARE SITE-SPECIFIC. DESIGN CONSIDERATIONS AND SHALL BE SPECIFIED BY ENGINEER OF RECORD.
  - B. CONTRACTOR TO PROVIDE EQUIPMENT WITH SUFFICIENT LIFTING AND REACH CAPACITY TO LIFT AND SET THE STRUCTURE (LIFTING CLUTCHES PROVIDED)
  - C. CONTRACTOR WILL INSTALL AND LEVEL THE STRUCTURE, SEALING THE JOINTS, LINE ENTRY AND EXIT POINTS (NON-SHRINK GROUT WITH APPROVED WATERSTOP OR FLEXIBLE BOOT)
  - D. CONTRACTOR TO TAKE APPROPRIATE MEASURES TO PROTECT CARTRIDGES FROM CONSTRUCTION-RELATED EROSION RUNOFF.
  - E. CARTRIDGE INSTALLATION, BY IMBRIMUM, SHALL OCCUR ONLY AFTER SITE HAS BEEN STABILIZED AND THE JELLYFISH UNIT IS CLEAN AND FREE OF DEBRIS. CONTACT IMBRIMUM TO COORDINATE CARTRIDGE INSTALLATION WITH SITE STABILIZATION.
  - F. CONTRACTOR TO REMOVE THE TRANSFER HOLE COVERS WHEN THE SYSTEM IS BROUGHT ONLINE AND THE SITE IS STABILIZED.

XXX.XX INFORMATION TO BE SUPPLIED BY ENGINEER OF RECORD

FOR SITE SPECIFIC DRAWINGS PLEASE CONTACT YOUR LOCAL JELLYFISH FILTER REPRESENTATIVE. SITE SPECIFIC DRAWINGS ARE BASED ON THE BEST AVAILABLE INFORMATION AT THE TIME. SOME FIELD REVISIONS TO THE SYSTEM LOCATION OR CONNECTION PIPING MAY BE NECESSARY BASED ON AVAILABLE SPACE OR SITE CONFIGURATION REVISIONS. ELEVATIONS SHOULD BE MAINTAINED EXCEPT WHERE NOTED ON BYPASS STRUCTURE.



MATERIAL LIST		
COUNT	DESCRIPTION	PROVIDED BY
XXX	15" HI-FLO CARTRIDGE	IMBRIMUM
XXX	15" DRAINDOWN CARTRIDGE	IMBRIMUM
XXX	CARTRIDGE BLANK (NO ORIFICE)	IMBRIMUM
1	12 CARTRIDGE RECEPTACLE INSTALLATION KIT	IMBRIMUM
1	ALUMINUM DECK - EJ #90080684DECK OR EQUIV.	IMBRIMUM
1	ALUMINUM BYPASS BAFFLE WITH HOOD- EJ #	IMBRIMUM
0	24"x24" [610x610 mm] FRAME & INLET GRATE	LANGLEY
1	21"Ø [533 mm] JELLYFISH FRAME AND COVER	LANGLEY
1	30"Ø [762 mm] JELLYFISH FRAME AND COVER	LANGLEY
TBD	JOINT SEALANT	LANGLEY

VAULT CAPACITY DATA	
SEDIMENT STORAGE CAPACITY (L, CF)	2000 L
OIL STORAGE CAPACITY (L, CF)	500 L

SITE SPECIFIC DATA REQUIREMENTS						
JELLYFISH MODEL	JFVLAN-IV					
STRUCTURE ID	*					
WATER QUALITY FLOW RATE (L/s)	*					
BYPASS FLOW RATE (L/s)	*					
PEAK FLOW RATE (L/s)	*					
RETURN PERIOD OF PEAK FLOW (yrs)	*					
# OF CARTRIDGES REQUIRED (HF / DD)	*					
CARTRIDGE SIZE (inches)	15"					
MAX DESIGNED BYPASS FLOW RATE (L/s)	110					
PIPE DATA:	I.E.	MAT'L	DIA	SLOPE %	HGL	
INLET #1	*	*	*	*	*	*
INLET #2	*	*	*	*	*	*
OUTLET	*	*	*	*	*	*


  
 407 FAIRVIEW DRIVE, WHITBY, ON L1N 3A9
   
 TF 800-995-4801 CA 416-980-9800 INTL +1-416-980-9800
   

  
 THIS PRODUCT MAY BE PROTECTED BY ONE OR MORE OF THE FOLLOWING PATENTS: U.S. NO. 2008/295746, U.S.A. NO. US/2007/06105

JFVLAN-IV-X-X-15C PROJECT: XXX

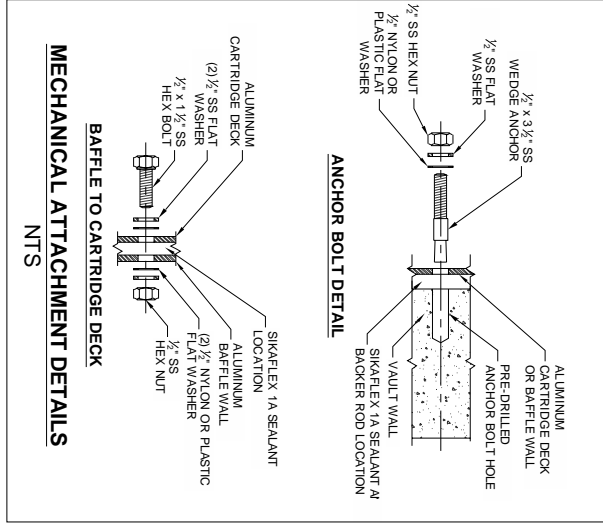
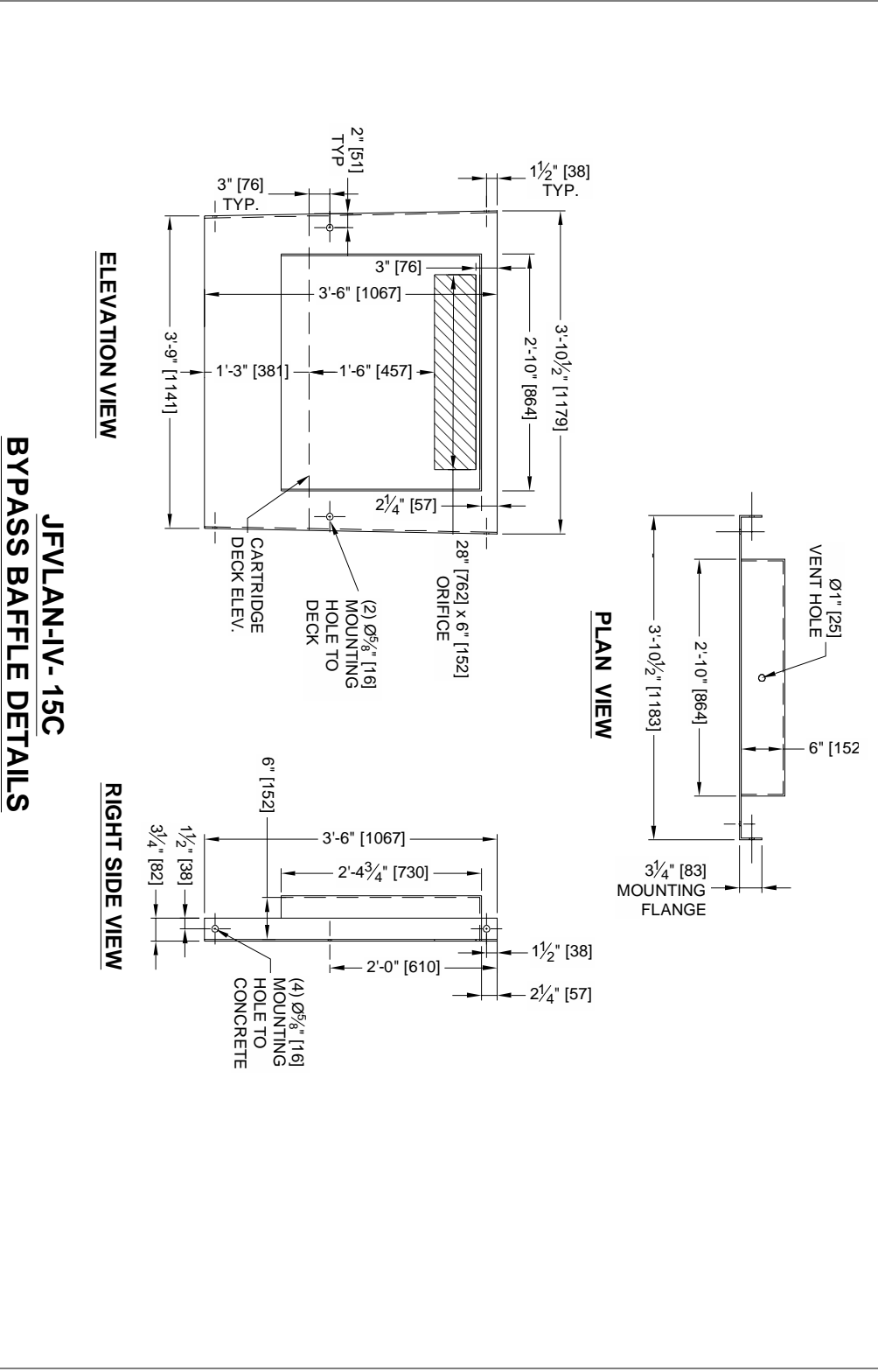
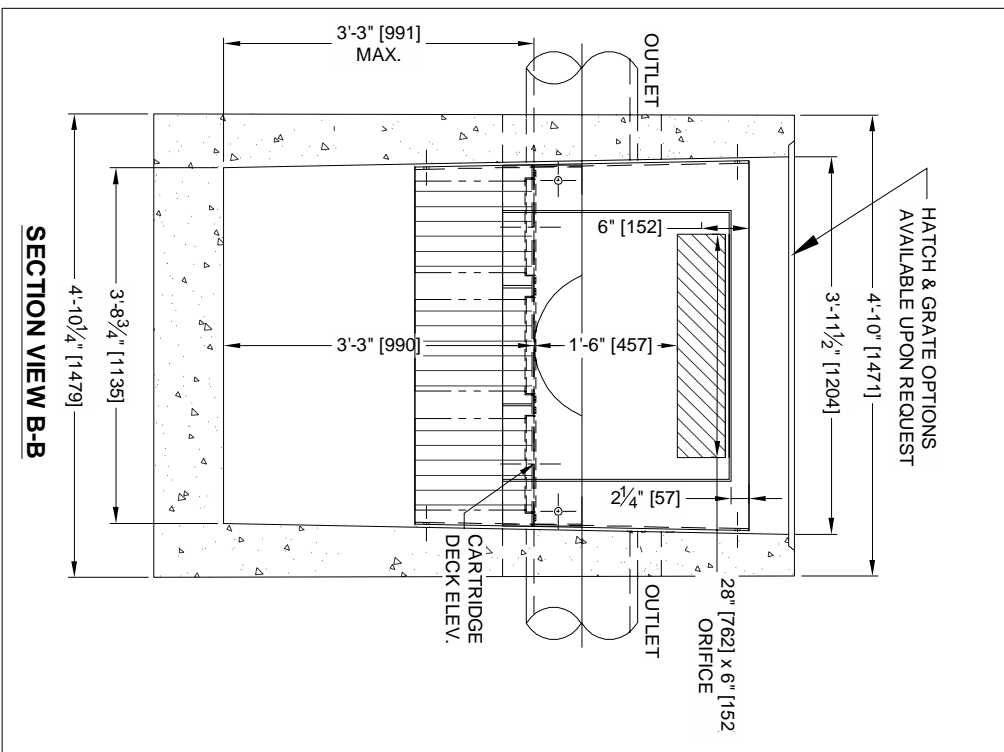
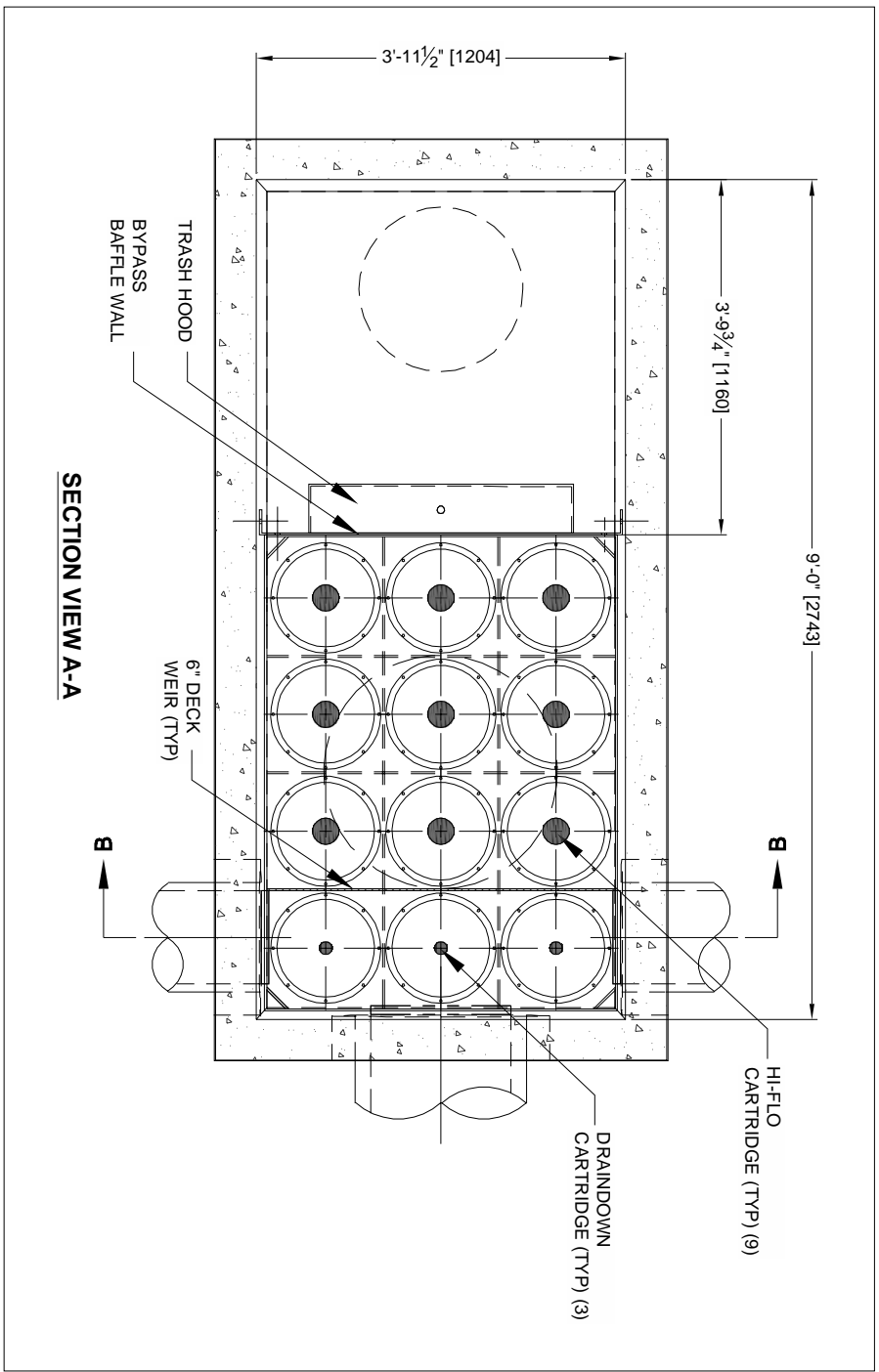
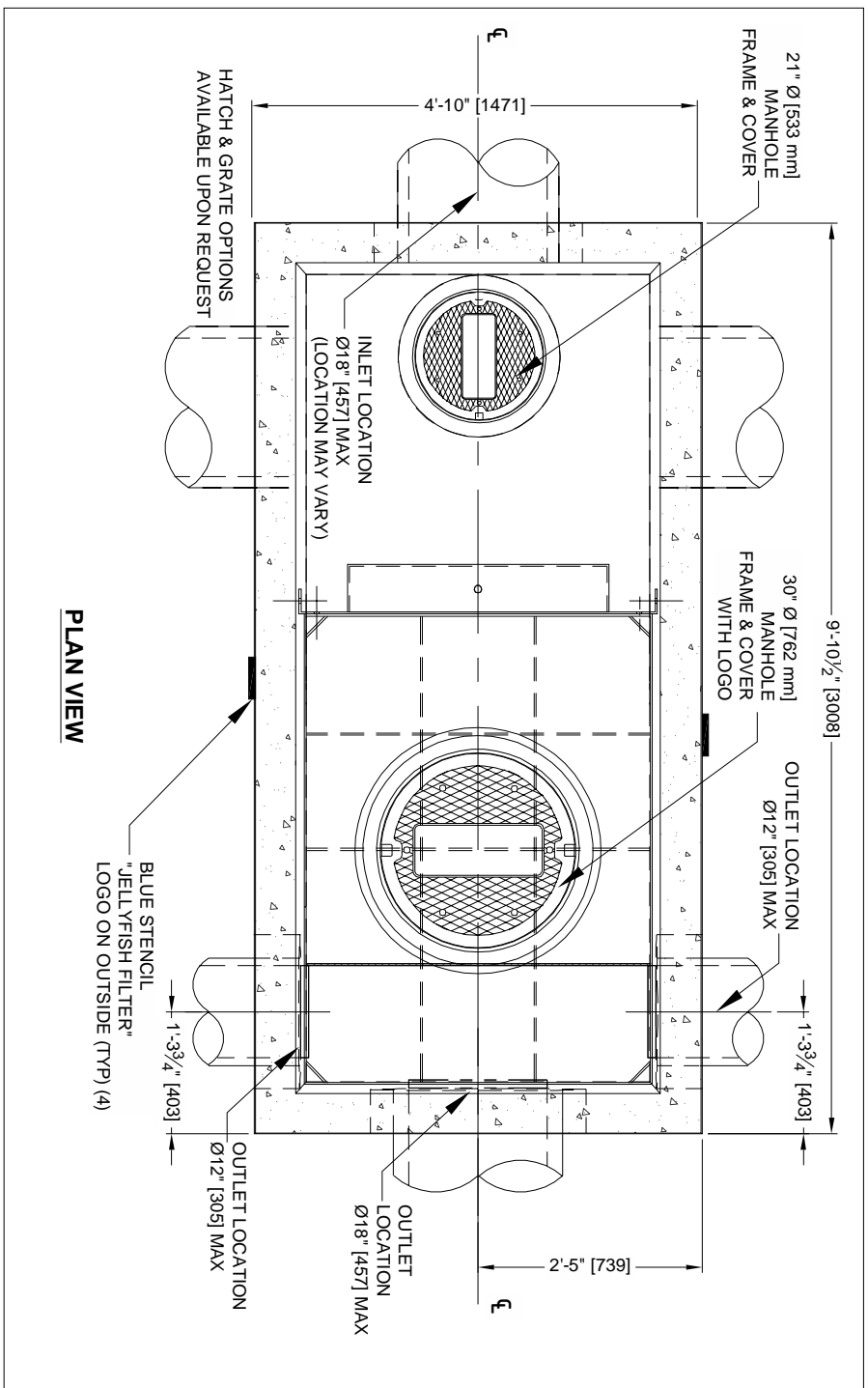

  
 Langley Vault Type III

BY	DATE	REVISION DESCRIPTION

The design and information shown on this drawing is provided as a service to the project owner, engineer, contractor by Imbrimum Systems ("Imbrimum"). Neither the drawing, nor any part thereof, may be used, reproduced or modified in any manner without the prior written consent of Imbrimum. Failure to comply is done at the user's own risk and Imbrimum expressly disclaims any liability or responsibility for the same.

If discrepancies between the supplied information upon which the drawing is based and actual field conditions are encountered as site work progresses, these discrepancies must be reported to Imbrimum immediately for re-evaluation of the design. Imbrimum accepts no liability for designs based on missing, incomplete or inaccurate information provided by others.

DESIGNED: BSF	DRAWN: BSF
CHECKED: KS	APPROVED: SP
PROJECT NO: #####	
DATE: #####	
SHEET: 1 OF 3	



**JFVLAN-IV-15C  
BYPASS BAFFLE DETAILS  
(BYPASS CAPACITY = 4.0 CFS [110 L/s])**

**IMBRIUM  
PROPOSAL  
DRAWING**

DESIGNED:	BSF	DRAWN:	BSF
CHECKED:	KS	APPROVED:	SP
PROJECT NO.:	#####		
SHEET:	2	OF	3

**imbrium**  
407 FAIRVIEW DRIVE, WHITBY, ON L1N 3A9  
TF 800-585-4801 CA 416-860-9900 INTL +1-416-860-9900

**Jellyfish® Filter**  
Langley Vault Type III

JFVLAN-IV-X-X-15C  
PROJECT: XXX

**Jellyfish**  
Langley Vault Type III

NO.	DATE	REVISION DESCRIPTION	BY

The design and information shown on this drawing is provided as a service to the project owner, engineer contractor by Imbrium Systems ("Imbrium"). Neither are encountered as site work progresses, these discrepancies must be reported to Imbrium immediately for re-evaluation of the design. Imbrium accepts no liability for designs based on missing, incomplete or inaccurate information provided by others.

If discrepancies between the supplied information up which the drawing is based and actual field conditions are encountered as site work progresses, these discrepancies must be reported to Imbrium immediately for re-evaluation of the design. Imbrium accepts no liability for designs based on missing, incomplete or inaccurate information provided by others.